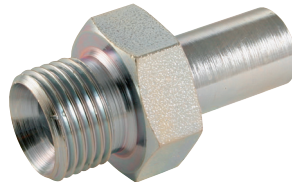
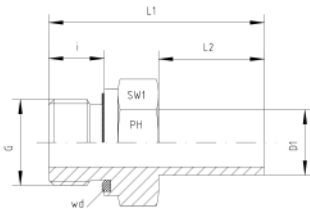


316 Stainless Steel DIN 2353 Tube Fittings



Metric Standpipe Adaptors, BSPP



Stainless Steel 1.4571 Temperature Range:
-60°C to +400°C (DIN 17 440, AD W 10)

Seal Temperature Range:
-20°C to +200°C (FPM eg Viton)

Not Pre-Assembled - ov

Thread: BSP - Parallel

wd = Sealing by an Elastomer Profiled Ring - Viton

Series	Pressure PN	Tube O.D. D1	Thread G	Approx. Dimensions				Order-Code
				L1	L2	i	SW1	
L	315	6	G 1/8"	32,5	19,0	8	14	EVGE-L-06-G 1/8"-ov-wd
L	315	6	G 1/4"	39,5	20,5	12	19	EVGE-L-06-G 1/4"-ov-wd
L	315	8	G 1/4"	41,0	20,5	12	19	EVGE-L-08-G 1/4"-ov-wd
L	315	8	G 3/8"	42,5	20,5	12	22	EVGE-L-08-G 3/8"-ov-wd
L	315	10	G 1/4"	39,5	20,5	12	19	EVGE-L-10-G 1/4"-ov-wd
L	315	10	G 3/8"	44,0	21,0	12	22	EVGE-L-10-G 3/8"-ov-wd
L	315	10	G 1/2"	47,0	21,0	14	27	EVGE-L-10-G 1/2"-ov-wd
L	315	12	G 1/4"	42,0	21,5	12	19	EVGE-L-12-G 1/4"-ov-wd
L	315	12	G 3/8"	45,0	22,0	12	22	EVGE-L-12-G 3/8"-ov-wd
L	315	12	G 1/2"	48,5	22,5	14	27	EVGE-L-12-G 1/2"-ov-wd
L	315	15	G 3/8"	45,5	22,5	12	22	EVGE-L-15-G 3/8"-ov-wd
L	315	15	G 1/2"	46,0	23,0	14	27	EVGE-L-15-G 1/2"-ov-wd
L	315	18	G 3/8"	44,0	23,5	12	22	EVGE-L-18-G 3/8"-ov-wd
L	315	18	G 1/2"	47,0	24,0	14	27	EVGE-L-18-G 1/2"-ov-wd
L	160	18	G 3/4"	52,0	24,0	16	32	EVGE-L-18-G 3/4"-ov-wd
L	160	22	G 3/8"	46,0	24,5	12	24	EVGE-L-22-G 3/8"-ov-wd
L	160	22	G 1/2"	50,5	24,5	14	27	EVGE-L-22-G 1/2"-ov-wd
L	160	22	G 3/4"	50,5	24,5	16	32	EVGE-L-22-G 3/4"-ov-wd
L	160	22	G 1"	52,5	25,5	18	41	EVGE-L-22-G 1"-ov-wd
L	160	28	G 3/4"	52,5	25,5	16	32	EVGE-L-28-G 3/4"-ov-wd
L	160	28	G 1"	54,0	25,5	18	41	EVGE-L-28-G 1"-ov-wd
L	160	35	G 1 1/4"	63,5	32,0	20	50	EVGE-L-35-G 1 1/4"-ov-wd
L	160	42	G 1 1/2"	70,0	32,0	22	55	EVGE-L-42-G 1 1/2"-ov-wd

Series	Pressure PN	Tube O.D. D1	Thread G	Approx. Dimensions				Order-Code
				L1	L2	i	SW1	
S	630	6	G 1/8"	32,5	19,0	8	14	EVGE-S-06-G 1/8"-ov-wd
S	630	6	G 1/4"	39,5	20,5	12	19	EVGE-S-06-G 1/4"-ov-wd
S	630	8	G 1/4"	41,0	20,5	12	19	EVGE-S-08-G 1/4"-ov-wd
S	630	8	G 3/8"	42,5	20,5	12	22	EVGE-S-08-G 3/8"-ov-wd
S	630	10	G 1/4"	39,5	20,5	12	19	EVGE-S-10-G 1/4"-ov-wd
S	630	10	G 3/8"	44,0	21,0	12	22	EVGE-S-10-G 3/8"-ov-wd
S	630	10	G 1/2"	46,5	20,5	14	27	EVGE-S-10-G 1/2"-ov-wd
S	630	12	G 1/4"	42,0	21,5	12	19	EVGE-S-12-G 1/4"-ov-wd
S	630	12	G 3/8"	45,0	22,0	12	22	EVGE-S-12-G 3/8"-ov-wd
S	630	12	G 1/2"	48,5	22,5	14	27	EVGE-S-12-G 1/2"-ov-wd
S	630	14	G 1/2"	51,0	24,5	14	27	EVGE-S-14-G 1/2"-ov-wd
S	400	16	G 3/8"	48,5	26,0	12	22	EVGE-S-16-G 3/8"-ov-wd
S	400	16	G 1/2"	51,0	26,0	14	27	EVGE-S-16-G 1/2"-ov-wd
S	400	16	G 3/4"	54,5	26,0	16	32	EVGE-S-16-G 3/4"-ov-wd
S	400	20	G 1/2"	56,5	29,5	14	27	EVGE-S-20-G 1/2"-ov-wd
S	400	20	G 3/4"	59,0	29,0	16	32	EVGE-S-20-G 3/4"-ov-wd
S	400	25	G 3/4"	63,0	33,0	16	32	EVGE-S-25-G 3/4"-ov-wd
S	400	25	G 1"	66,0	33,0	18	41	EVGE-S-25-G 1"-ov-wd
S	400	30	G 1 1/4"	71,0	34,0	20	50	EVGE-S-30-G 1 1/4"-ov-wd
S	315	38	G 1 1/2"	83,5	40,0	22	55	EVGE-S-38-G 1 1/2"-ov-wd