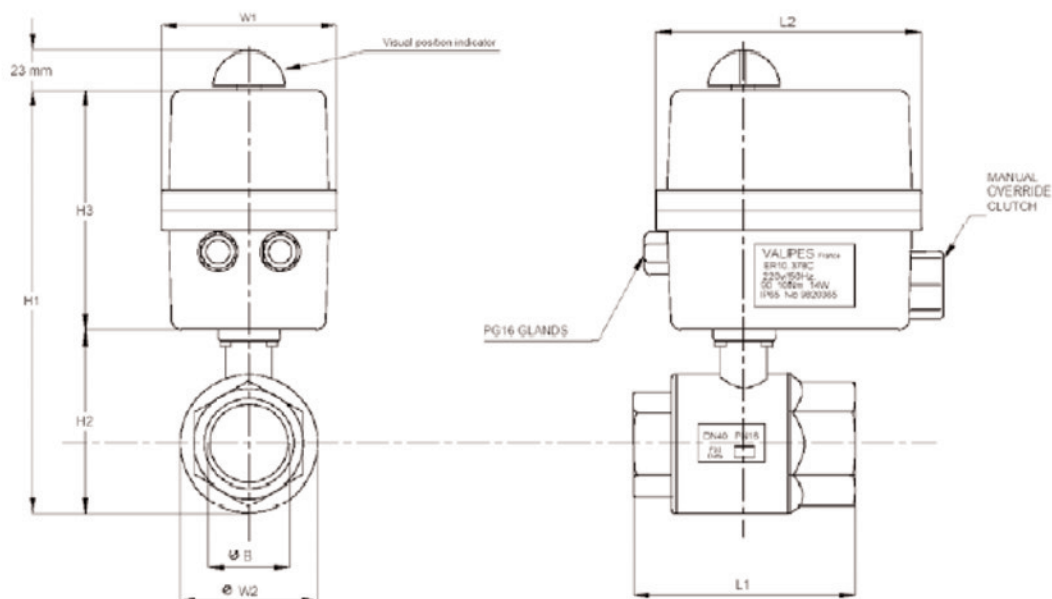


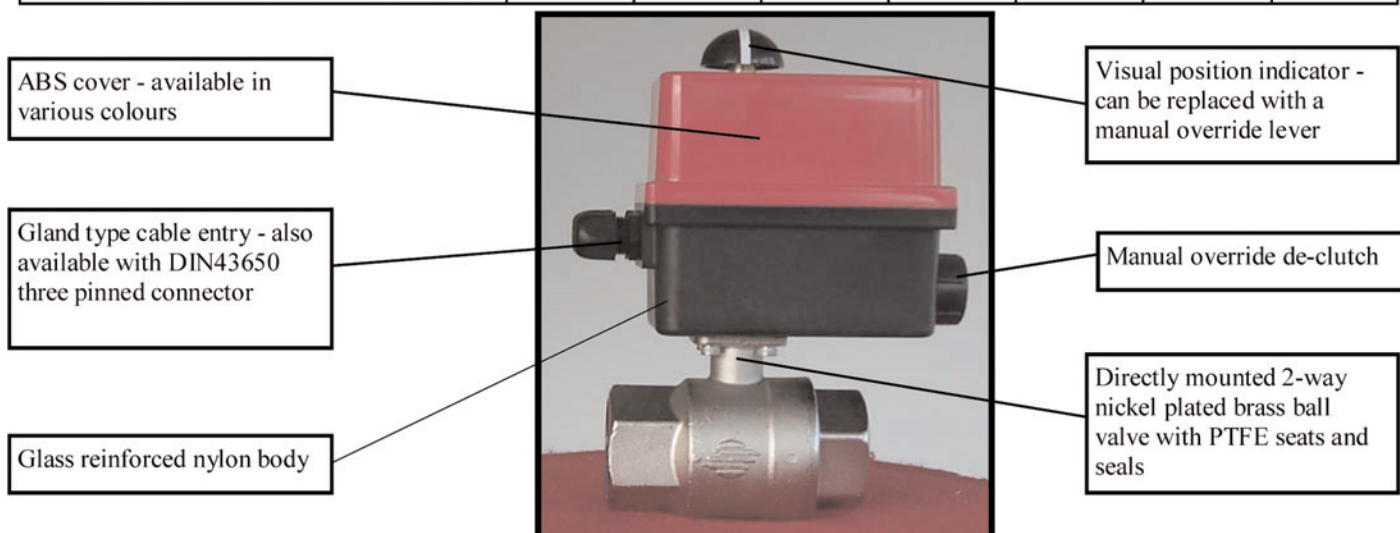
E100

ELECTRIC ACTUATOR & TWO WAY NICKEL PLATED BRASS BALL VALVE



Dimensions

Part Reference	E100H003	E100H004	E100H005	E100H006	E100H007	E100H008	E100H009
Actuator Type	ER10	ER10	ER10	ER10	ER10	ER20	ER35
Size	3/8"	1/2"	3/4"	1"	1 1/4"	1 1/2"	2"
ØB	10	15	20	25	32	40	50
L1	69	69	77	89	103	114	134
L2	136	136	136	136	136	136	136
H1	169.4	169.4	180.3	188.2	205.5	217.3	232.6
H2	45.4	45.4	56.3	64.2	81.5	93.3	108.6
H3	124	124	124	124	124	124	124
W1	92	92	92	92	92	92	92
ØW2	31.8	31.8	40.0	48.0	62.0	72.6	88.5
Operating Time 230-110V 50Hz	25 secs	25 secs	25 secs	25 secs	25 secs	20 secs	35 secs
Operating Time 24V AC/DC	10 secs	10 secs	10 secs	10 secs	10 secs	4 secs	8 secs
Operating Time 12V AC/DC	25 secs	25 secs	25 secs	25 secs	25 secs	8 secs	16 secs



E100

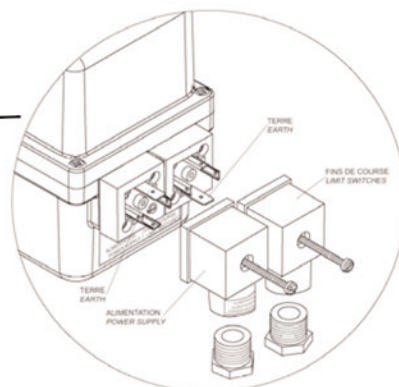
ELECTRIC ACTUATOR & TWO WAY NICKEL PLATED BRASS BALL VALVE

Actuator Features

- 90° reversible electric actuator, ABS & Nylon casing
- Working temperature -10°C to +55°C
- Available in 230/110V AC (50% duty) or 24/12V AC/DC (30% duty)
- Enclosure rating: IP65
- Standard equipment: CE marked
- 2 adjustable limit switches with SPDT volt free contacts rated 5A
- Visual position indicator/manual override handle
- Torque limiter

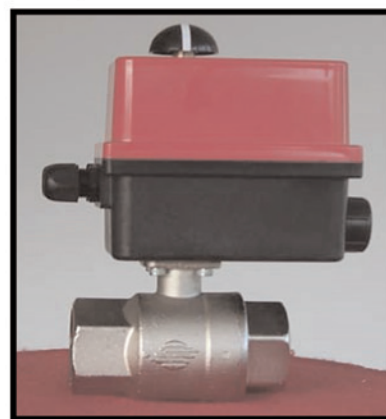
Options

- Electrical connectors to DIN 43650
- 10W anti condensation heater
- 4-20mA/0-10v positioning system
- Failsafe module
- Potentiometer for position feedback
- 3-position system
- ATEX Explosion proof actuator



Valve Features

- The valve is suitable for low pressures on condition that non-aggressive fluids are used.
- Working temperature: from -20°C to +150°C for fluids. Working pressure: up to 16 Bar.
- Suitable for use with water, oil, gas and light applications.
- Threaded ends are per UNI/ISO 7/1 Rp specifications.



VALVE MATERIALS			
1	Shaft	Brass-nickel plated	UNI 5706-65
2	O-Ring	Viton	
3	Top sealing	PTFE	
4	O-Ring	Viton	
5	Seals	PTFE	
6	Ball	Brass-chromium plated	UNI 5706-65
7	Body	Brass-nickel plated	UNI 5706-65
8	Threaded end	Brass-nickel plated	UNI 5706-65

