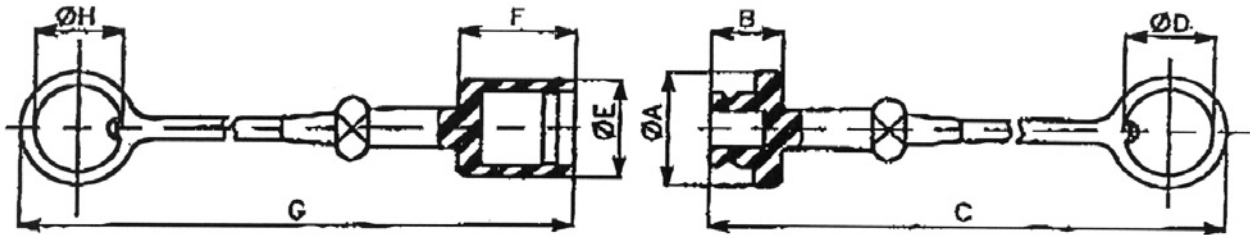
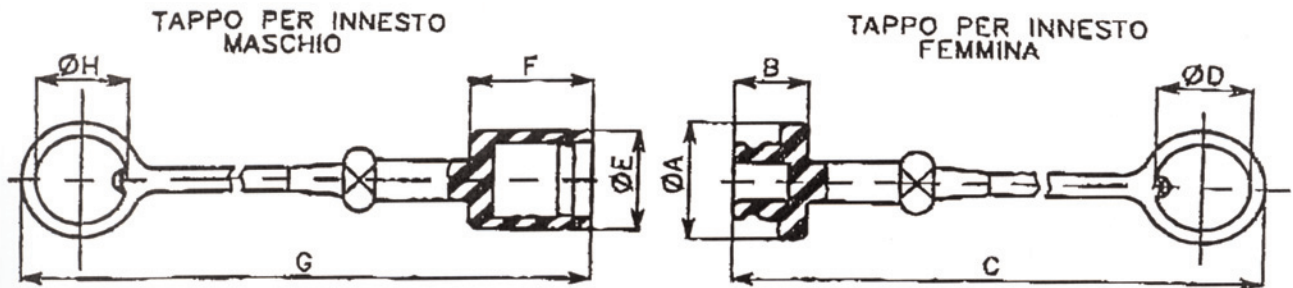


Plastic Caps for Standard ISO 'A' Couplings



CODICE	Descrizione	TIPO DI INNESTO	A	B	C	D	E	F	G	H	Temperatura °C	Materiale
8150..012	T.M.B. 1/4	IN.FISCOA14	20	16	236	19.5	-	-	-	-	-30/100	PVC
8150..013	T.F.B. 1/4	IN.MISCOA14	-	-	-	-	18	23	243	19.5	-30/100	PVC
8150..014	T.M.B. 3/8	IN.FISCOA38	26	16	239	25.5	-	-	-	-	-30/100	PVC
8150..015	T.F.B. 3/8	IN.MISCOA38	-	-	-	-	24	27	250	25.5	-30/100	PVC
8150..016	T.M.B. 3/4	IN.FISCOA34	40	19	285	32	-	-	-	-	-30/100	PVC
8150..017	T.F.B. 3/4	IN.MISCOA34	-	-	-	-	36	41	307	32	-30/100	PVC
8150..018	T.M.B. 1'	IN.FISCOA100	45	24	293	38	-	-	-	-	-30/100	PVC
8150..019	T.F.B. 1'	IN.MISCOA100	-	-	-	-	42	48	317	38	-30/100	PVC

Plastic Caps for Standard ISO 'A' Couplings



CODICE	Descrizione	TIPO DI INNESTO	A	B	C	D	E	F	G	H	Temperatura °C	Materiale
150..000	T.M. 1/4	IN.F IR14	26	16	236	19.5	-	-	-	-	-30/100	PVC
150..001	T.F. 1/4	IN.M IR14	-	-	-	-	22	26	246	19.5	-30/100	PVC
150..002	T.M. 3/8	IN.F IR38	30	18	241	25.5	-	-	-	-	-30/100	PVC
150..003	T.F. 3/8	IN.M IR38	-	-	-	-	27	29	252	25.5	-30/100	PVC
150..004	T.M. 1/2	IN.F ISO A 1/2	33	20	290	28	-	-	-	-	-30/100	PVC
150..005	T.F. 1/2	IN.M ISO A 1/2	-	-	-	-	29	32	256	28	-30/100	PVC
150..006	T.M. 3/4	IN.F IR34	40	25	291	32	-	-	-	-	-30/100	PVC
150..007	T.F. 3/4	IN.M IR34	-	-	-	-	35	42	308	32	-30/100	PVC
150..008	T.M. 1'	IN.F IR100	44	24	293	38	-	-	-	-	-30/100	PVC
150..009	T.F. 1'	IN.M IR100	-	-	-	-	40	47	316	38	-30/100	PVC

Plastic Protection Caps for Premier & Premier Plus Flat Face Couplings



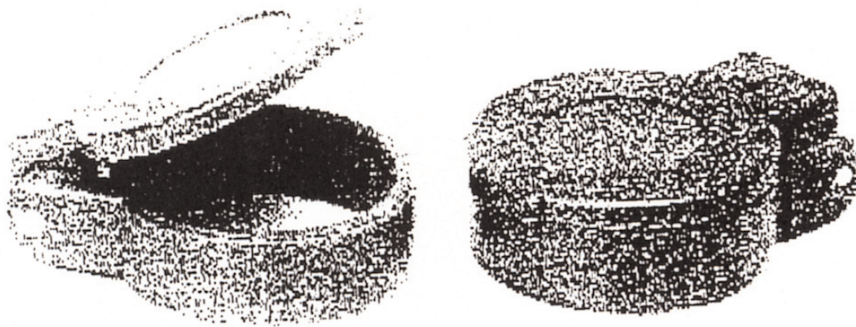
Plastic **CAPS** for **MALE** Couplings

Plastic **CAPS** for **FEMALE** Couplings

Part Number	To Fit Coupling
FF14P	FM10-04
FP3DC	FF38M
FF3812P	FF38-12M
FF12P	FM20-08
FF34P	FM20-12
FF1P	FM10-16
FF114P	FM10-20

Part Number	To Fit Coupling
FF14C	FF10-04
FP3DP	FF38F & FF38-12F
FF12C	FF20-08
FF34C	FF20-12
FF1C	FF10-16
FF114C	FF10-20

Flip Top Plastic Caps



Suitable for:

- *FIRG Premier Range*
- *A Series Premier Plus*
- *IRS Push Pull*

Flip Type Caps for **FEMALE** Couplings

Part Number	Colours Available	No. of Coupling
F F9 CAP + Colour	Red & Black	9
F F9 CAP + Colour	Red, Black, Green, Brown & Orange	13
F F9 CAP + Colour	Blue	15
F F9 CAP + Colour	Blue	17