

Pump TB-D Hand lever



APPLICATION

For lubrication at friction points on presses, stamping presses, machine tools, conveyors, etc.

PRODUCT CHARACTERISTICS

- Multi-line pump
- Hand lever actuation
- Output volume max. 0.5 cm³/stroke
- Discharge pressure max. 25 bar
- Lubricant: grease
- Surface signal grey RAL 7004



FUNCTION

By pulling the hand lever the piston is raised and grease is forced into the inner bore of the piston. During the upward motion of the latter the cross bore connects the inside chamber of the piston with the outlet ports one after the other. These ports are not on the same level and the ring groove of the cross port frees the way to the outlet ports alternatively. When returning the hand lever to its original position the piston is lowered and lubricant is sucked into the required cap.

A. PUMP TYPE	Code
---------------------	-------------

TBH

B. ANZAHL DER AUSLÄSSE	Code
-------------------------------	-------------

1 outlet	01
2 outlets	02
4 outlets	04
5 outlets	05
6 outlets	06
8 outlets	08
Outlet X	10

C. REVISION	Code
--------------------	-------------

Status A	A
----------	---

D. KINDS OF DRIVE	Code
--------------------------	-------------

Hand lever	01
------------	----

E. POSITION OF DRIVE	Code
-----------------------------	-------------

without	0
---------	---

F. RESERVOIR	Code
---------------------	-------------

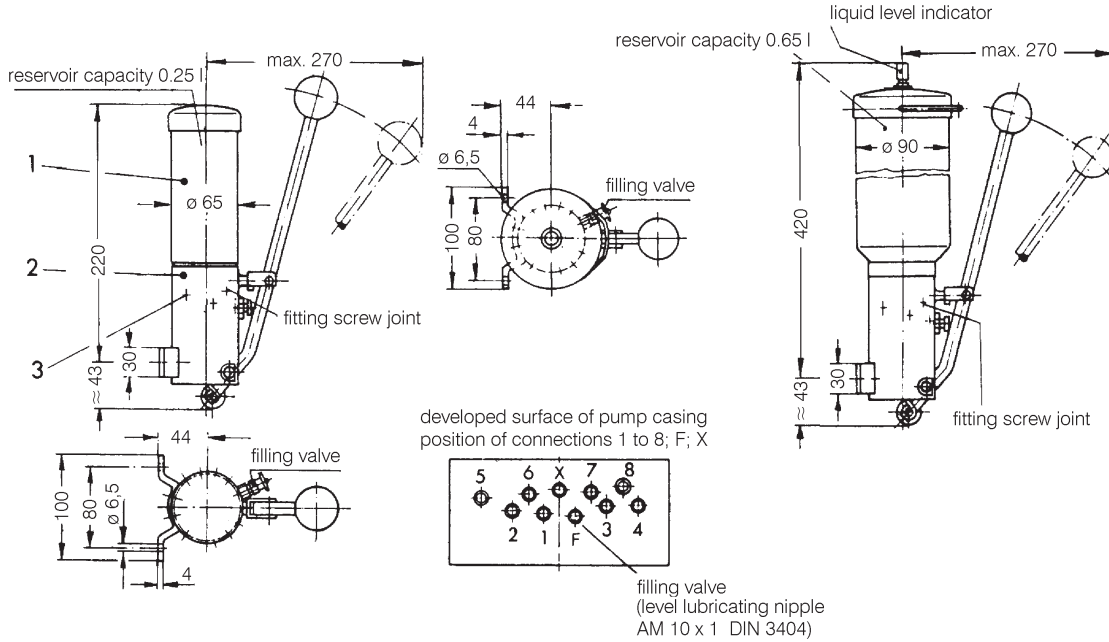
0.25 liters grease	A
0.65 liters grease	B

G. ACCESSORIES	Code
-----------------------	-------------

without	00
---------	----

SPECIFICATION

Discharge pressure : _____ max. 25 bar
 Number of outlets : _____ at choice 1, 2, 4, 5, 6 or 8
 Operating force at 25 bar : _____ 200 N (20 kp)
 Output volume per stroke : _____ outlet 1, 2, 4, 5, 6 or 8 each 0.5 cm³
 Reservoir capacity : _____ 0.25 l or 0.65 liters
 Lubricants :
 Grease _____ up to NLGI class 2, DIN 51818
 Service temperature : _____ - 20 °C up to + 80 °C



EXAMPLE OF ORDER

Code											
T	B	H	0	1	A	0	1	O	A	0	0

Pump type TB-D	Code: TBH	
Number of outlets 1 outlet	Code: 01	
Revision Status A	Code: A	
Kinds of drive Hand lever	Code: 01	
Position of drive without	Code: O	
Reservoir 0.25 liters grease	Code: A	
Accessories without	Code: 00	