

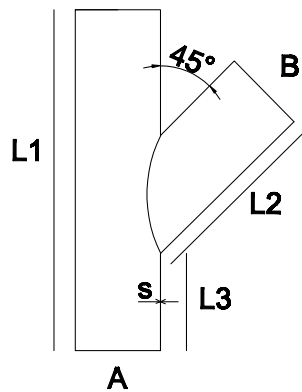
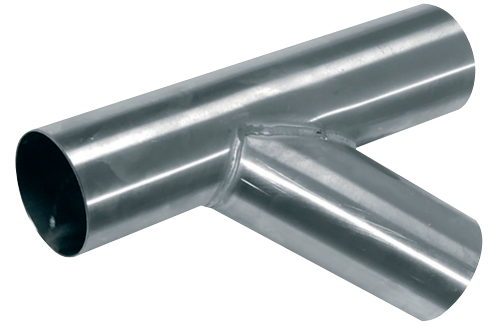
# STBP

## 45° Branch Pipes

Branch pipe STBP is manufactured in welded galvanized design.

Branch pipe SBPS is manufactured in welded stainless steel AISI 304.

Branch in 45° is standard. Also available in 15° and 30°.



Ø diameter mm	A, C mm	B mm	L1 mm	L2 mm	L3 mm	S mm	Weight kg
050-050	50	50	300	155	110	2,0	0,5
063-050	63	50	300	155	110	2,0	0,6
063-063	63	63	300	155	105	2,0	0,7
076-050	76	50	300	155	110	2,0	0,7
076-063	76	63	300	155	110	2,0	0,8
076-076	76	76	300	155	110	2,0	0,9
102-050	102	50	400	220	161	2,0	0,9
102-063	102	63	400	220	116	2,0	0,9
102-076	102	76	400	220	116	2,0	0,9
102-102	102	102	400	220	114	2,0	0,9
108-050	108	50	400	220	160	2,0	1,6
108-063	108	63	400	220	160	2,0	1,9
108-076	108	76	400	220	115	2,0	2,0
108-108	108	108	400	230	115	2,0	2,1
127-063	127	63	400	220	128	2,0	2,1
127-076	127	76	400	220	128	2,0	2,2
127-102	127	102	400	230	127	2,0	2,3
127-108	127	108	400	230	122	2,0	2,3
127-127	127	127	400	235	124	2,0	2,4
152-063	152	63	500	265	196	2,0	4,9
152-076	152	76	500	270	187	2,0	5,1
152-102	152	102	500	270	192	2,0	5,2
152-108	152	108	500	270	187	2,0	5,3
152-127	152	127	500	285	174	2,0	5,4
152-152	152	152	500	295	156	2,0	5,7
203-127	203	127	600	365	200	2,0	7,4
203-152	203	152	600	365	200	2,0	7,8
203-203	203	203	600	365	200	2,0	8,2