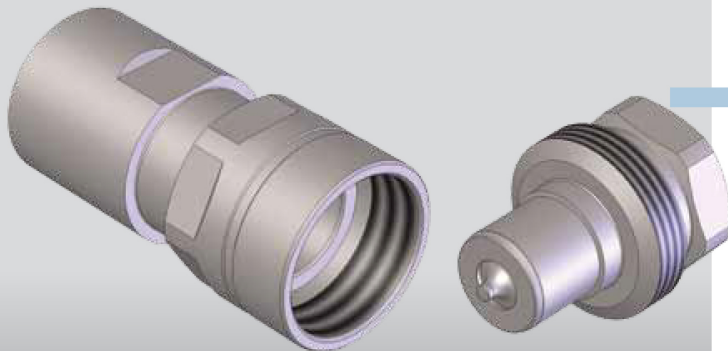
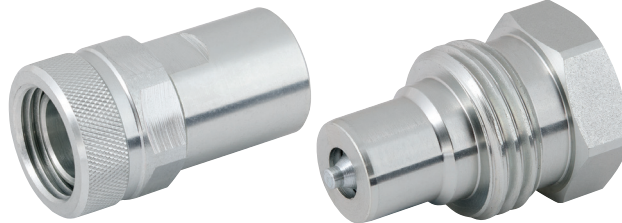
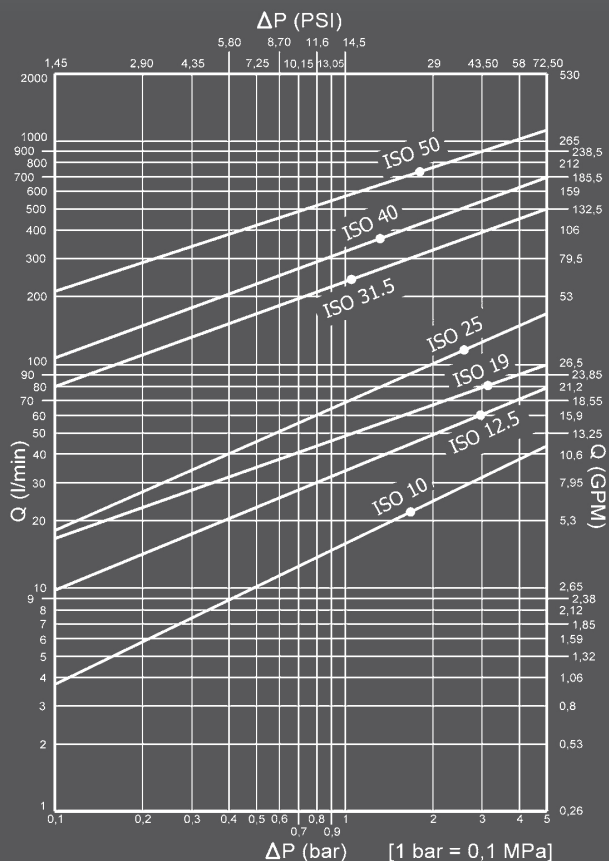


VVS High Pressure Screw Couplings & Plugs



Nominal size				Max working pressure	Rated flow	Max flow rate	Min burst pressure			Fluid spillage
DNP	BG	ISO	mm				Male	Female	Coupled	
10	2	10	6,2	65	18	18	300	300	300	1,9
13	3	12,5	9	60	23	23	250	270	220	2,7
20	4	19	11	50	45	45	240	260	210	9,3
25	5	25	13,3	46	106	106	230	260	200	16
30	6	31,5	22,2	36	189	189	150	150	150	30
39	7	40	24,6	36	300	300	120	150	150	54
50	8	50	30	21	757	757	130	130	105	120

1 MPa = 145,04 psi • 1 l = 0,264 gal



SCREW/VVS

VITE ALTA PRESSIONE/ACCIAIO
HIGH PRESSURE SCREW COUPLINGS/STEEL
HOCHDRUCKSCHRAUBKUPPLUNGEN/STAHL
COUPLEURS A VISSE HAUTES PRESSION/ACIER

Caratteristiche tecniche

- Intercambiabilità: Faster VVS
- Occlusione: valvola
- Aggancio: a vite
- Materiale: acciaio
- Finitura: Zn-Fe (Cr III)
- Filettatura: BSP - NPT
- Guarnizioni standard: NBR
- Temperatura d'esercizio: -25 °C +100 °C
- Guarnizioni opzionali: FKM, EPDM o altro
- Pressioni di esercizio: 210-650 bar
- Connessione in pressione: consentita (lato maschio o lato femmina)

Technical data

- Interchange: VVS Faster
- Occlusion: poppet
- Locking: screw
- Material: steel
- Finishing: Zn-Fe (Cr III)
- Threads: BSP - NPT
- Standard seals: NBR
- Working temperature: -25 °C +100 °C
- Optional seals: FKM, EPDM or more
- Working pressure: 210-650 bar
- Connection under pressure: allowed (both male or female side)

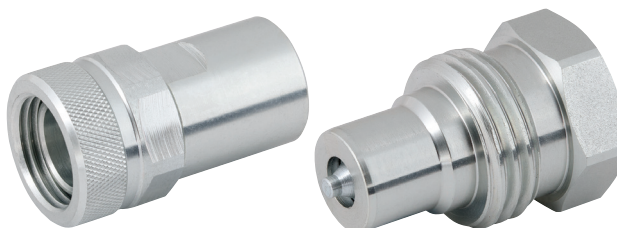
Technische Merkmale

- Austauschbarkeit: VVS Faster
- Verschluss: ventil
- Kupplung: Schraubweise
- Werkstoff: Stahl
- Ausführung: Zn-Fe (Cr III)
- Gewinde: BSP - NPT
- Standard-Dichtungen: NBR
- Betriebstemperatur: -25 °C +200 °C
- Dichtungen nach Wahl: FKM, EPDM, usw.
- Betriebsdruck: 210-650 bar
- Kuppeln unter Druck: erlaubt (Steckerseite oder Muffenseite)

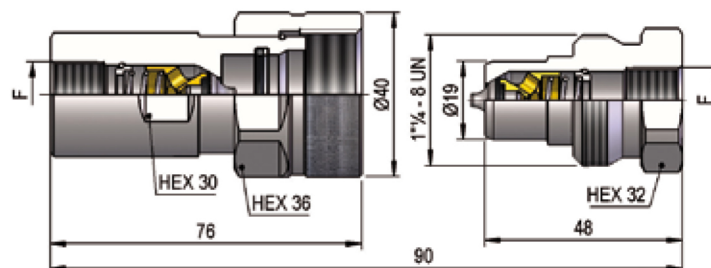
Caracteristiques techniques

- Intercambiabilità: VVS Faster
- Obturation: clapet
- Accrochage: a vissé
- Matériel: acier
- Traitement: Zn-Fe (Cr III)
- Taraudage: BSP - NPT
- Joints standard: NBR
- Température de service: -25 °C +100 °C
- Joints facultatifs: FKM, EPDM, ect.
- Pression de service: 210-650 bar
- Connexion sous pression: possible (côté male ou femelle)

VVS High Pressure Screw Couplings & Plugs

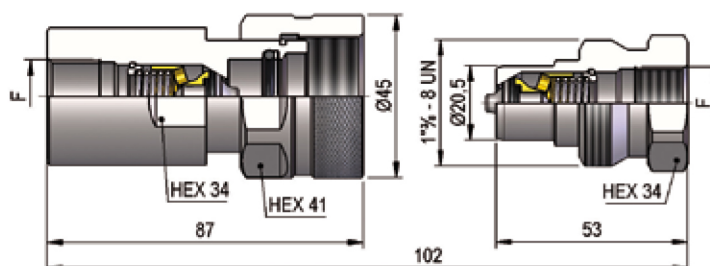


VV1 DN10 - BG 2 - ISO 10



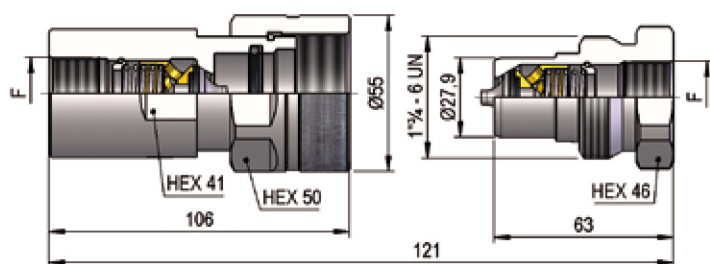
F	STANDARD	FEMMINA - FEMALE - MUFFE - FEMELLE			MASCHIO - MALE - STECKER - MALE		
		COD. F	Weight (g)	Packaging (pcs.)	COD. M	Weight (g)	Packaging (pcs.)
BSP 3/8"	DIN 3852-2-X	VV1.1010.002	344	24	VV1.1010.003	155	42
NPT 3/8"	ANSI B1.20.3	VV1.1010.012	346	24	VV1.1010.013	157	42

VV1 DN13 - BG 3 - ISO 12.5



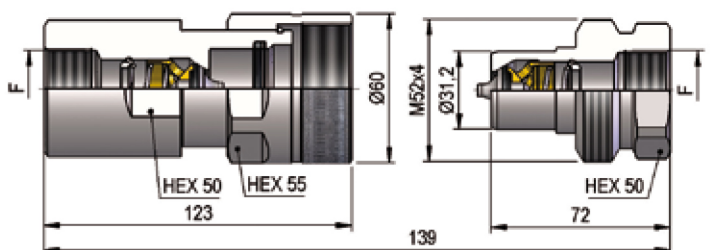
F	STANDARD	FEMMINA - FEMALE - MUFFE - FEMELLE			MASCHIO - MALE - STECKER - MALE		
		COD. F	Weight (g)	Packaging (pcs.)	COD. M	Weight (g)	Packaging (pcs.)
BSP 1/2"	DIN 3852-2-X	VV1.1313.002	576	20	VV1.1313.003	177	35
NPT 1/2"	ANSI B1.20.3	VV1.1313.012	582	20	VV1.1313.013	180	35

VV1 DN20 - BG 4 - ISO 19



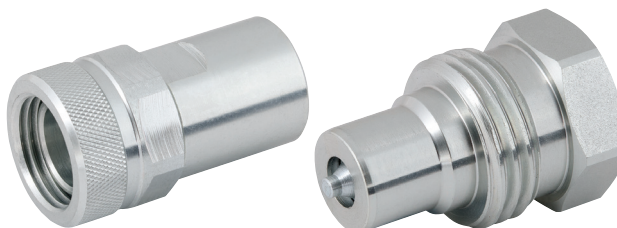
F	STANDARD	FEMMINA - FEMALE - MUFFE - FEMELLE			MASCHIO - MALE - STECKER - MALE		
		COD. F	Weight (g)	Packaging (pcs.)	COD. M	Weight (g)	Packaging (pcs.)
BSP 3/4"	DIN 3852-2-X	VV1.2019.002	988	20	VV1.2019.003	364	24
NPT 3/4"	ANSI B1.20.3	VV1.2019.012	997	20	VV1.2019.013	373	24

VV1 DN25 - BG 5 - ISO 25

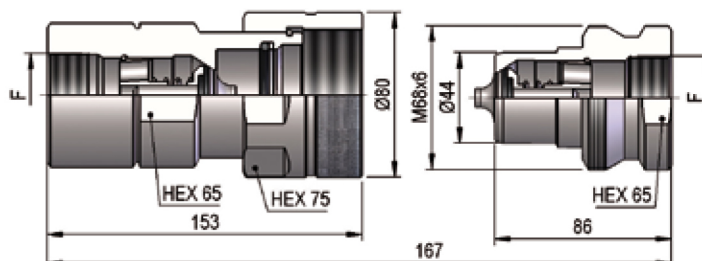


F	STANDARD	FEMMINA - FEMALE - MUFFE - FEMELLE			MASCHIO - MALE - STECKER - MALE		
		COD. F	Weight (g)	Packaging (pcs.)	COD. M	Weight (g)	Packaging (pcs.)
BSP 1"	DIN 3852-2-X	VV1.2525.002	1403	15	VV1.2525.003	532	18
NPT 1"	ANSI B1.20.3	VV1.2525.012	1481	15	VV1.2525.013	540	18

VVS High Pressure Screw Couplings & Plugs

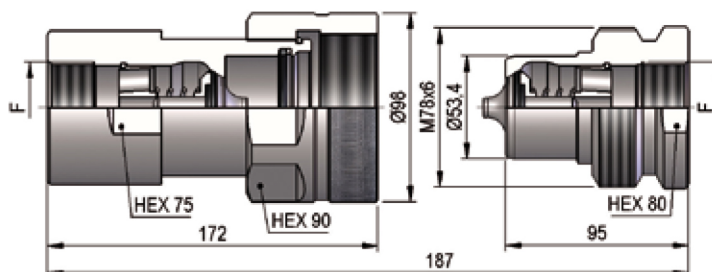


VV1 DN30 - BG 6 - ISO 31.5



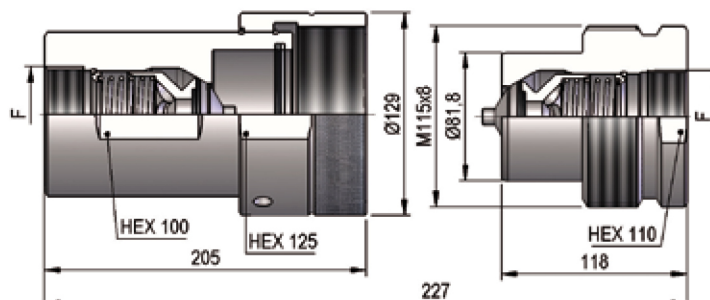
F	STANDARD	FEMMINA - FEMALE - MUFFE - FEMELLE			MASCHIO - MALE - STECKER - MALE		
		COD. F	Weight (g)	Packaging (pcs.)	COD. M	Weight (g)	Packaging (pcs.)
BSP 1 1/4"	DIN 3852-2-X	VV1.3031.002	2870	8	VV1.3031.003	1050	6
NPT 1 1/4"	ANSI B1.20.3	VV1.3031.012	2950	8	VV1.3031.013	1092	6

VV1 DN39 - BG 7 - ISO 40



F	STANDARD	FEMMINA - FEMALE - MUFFE - FEMELLE			MASCHIO - MALE - STECKER - MALE		
		COD. F	Weight (g)	Packaging (pcs.)	COD. M	Weight (g)	Packaging (pcs.)
BSP 1 1/2"	DIN 3852-2-X	VV1.3939.002	4440	3	VV1.3939.003	1700	8
NPT 1 1/2"	ANSI B1.20.3	VV1.3939.012	4470	3	VV1.3939.013	1720	8

VV1 DN50 - BG 8 - ISO 50



F	STANDARD	FEMMINA - FEMALE - MUFFE - FEMELLE			MASCHIO - MALE - STECKER - MALE		
		COD. F	Weight (g)	Packaging (pcs.)	COD. M	Weight (g)	Packaging (pcs.)
BSP 2"	DIN 3852-2-X	VV1.5051.002	8670	2	VV1.5051.003	4930	2
NPT 2"	ANSI B1.20.3	VV1.5051.012	8920	2	VV1.5051.013	5070	2