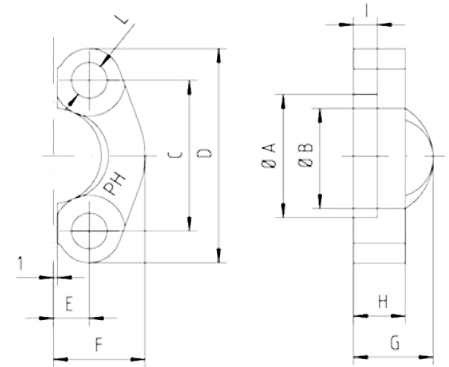


# Split Flanges



## 3000 psi

Max. Working Pressure	Nominal Flange Size	Approximate Dimensions										Order Code	
		A	B	C	D	E	F	G	H	I	L		
bar													
345	1/2"	30.96	24.26	38.10	54	8.74	22.8	19	13	6.22	8.50	FLH-3-1/2	
345	3/4"	38.89	32.13	47.63	65	11.13	25.9	22	14	6.22	10.50	FLH-3-3/4	
345	1"	45.24	38.48	52.37	70	13.08	29.2	24	16	7.49	10.50	FLH-3-1	
276	1.1/4"	51.59	43.69	58.72	79	15.09	36.3	22	16	7.49	12.00	FLH-3-1.1/4	
207	1.1/2"	61.09	50.80	69.85	94	17.86	41.1	25	16	7.49	13.50	FLH-3-1.1/2	
207	2"	72.24	62.74	77.77	102	21.44	48.2	26	16	9.02	13.50	FLH-3-2	
172	2.1/2"	84.94	74.93	88.90	114	25.40	54.1	38	19	9.02	13.50	FLH-3-2.1/2	
138	3"	102.39	90.93	106.38	135	30.96	65.3	41	22	9.02	16.75	FLH-3-3	

## 6000 psi

Max. Working Pressure	Nominal Flange Size	Approximate Dimensions										Order Code
		A	B	C	D	E	F	G	H	I	L	
bar												
420	1/2"	32.45	24.64	40.49	56	9.12	23.6	22	16	7.24	8.50	FLH-6-1/2
420	3/4"	42.06	32.51	50.80	71	11.91	30.0	28	19	8.26	10.50	FLH-6-3/4
420	1"	48.41	38.86	57.15	81	13.89	34.8	33	24	9.02	12.50	FLH-6-1
420	1.1/4"	54.76	44.45	66.68	95	15.88	38.6	38	27	9.78	14.50	FLH-6-1.1/4
420	1.1/2"	64.29	51.56	79.38	113	18.26	47.5	43	30	12.07	16.75	FLH-6-1.1/2
420	2"	80.16	67.56	96.82	133	22.23	56.9	52	37	12.07	21.00	FLH-6-2