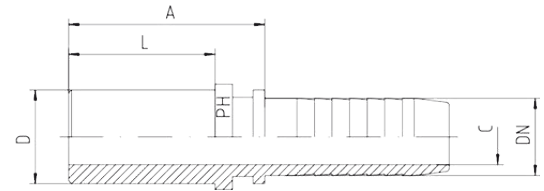
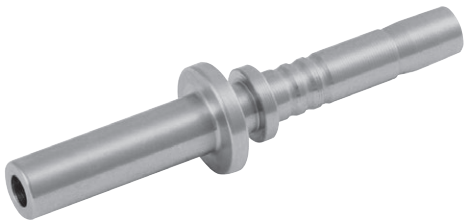


# Standpipes, S Series



- Heavy series = BES, straight

Hose	Bore	Tube OD	Approx. Dimensions			Order Code
DN		D	A	C	L	
05	3/16"	6	26.5	3.0	20.0	BES-06-DN05
06	1/4"	6	28.5	4.0	20.0	BES-06-DN06
06	1/4"	8	31.0	4.0	22.0	BES-08-DN06
08	5/16"	8	31.0	5.0	23.0	BES-08-DN08
06	1/4"	10	33.5	4.0	24.0	BES-10-DN06
08	5/16"	10	31.5	5.5	23.0	BES-10-DN08
10	3/8"	10	34.0	7.0	25.0	BES-10-DN10
06	1/4"	12	35.5	4.0	26.0	BES-12-DN06
08	5/16"	12	35.5	5.5	26.0	BES-12-DN08
10	3/8"	12	34.0	7.0	25.0	BES-12-DN10
12	1/2"	12	34.0	9.0	25.0	BES-12-DN12
10	3/8"	14	35.5	7.0	28.0	BES-14-DN10
12	1/2"	16	38.5	9.5	30.0	BES-16-DN12
12	1/2"	20	42.0	9.5	36.0	BES-20-DN12
16	5/8"	20	45.0	12.5	36.0	BES-20-DN16
19	3/4"	20	43.0	14.5	31.0	BES-20-DN19
19	3/4"	25	51.0	14.5	40.0	BES-25-DN19
25	1"	25	46.0	18.0	34.5	BES-25-DN25
25	1"	30	56.0	20.0	44.0	BES-30-DN25
31	1.1/4"	38	62.0	25.5	50.0	BES-38-DN31