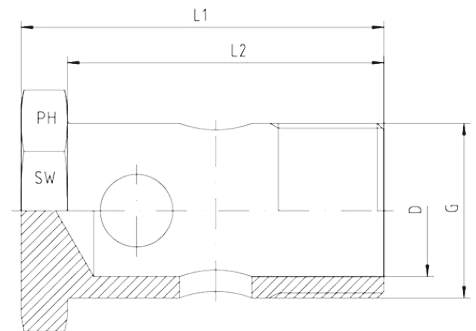
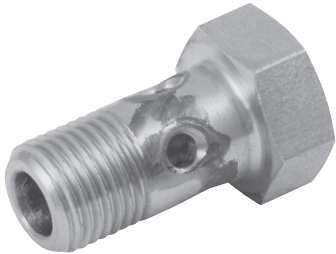


Banjos



- Metric (DIN 7643) + BSP

Thread	Approx. Dimensions				Order Code
G	L1	L2	D	SW	
M10 x 1	25	19	5.5	14	HS-M10X1
M12 x 1.5	30	24	7.0	17	HS-M12X1.5
M14 x 1.5	32	26	9.0	19	HS-M14X1.5
M16 x 1.5	34	28	11.0	22	HS-M16X1.5
M18 x 1.5	38	32	13.0	24	HS-M18X1.5
M22 x 1.5	46	39	16.0	27	HS-M22X1.5
M26 x 1.5	52	45	20.0	32	HS-M26X1.5
G1/8"	25	19	5.5	14	HS-G1/8
G1/4"	32	26	8.0	19	HS-G1/4
G3/8"	34	28	11.0	22	HS-G3/8
G1/2"	45	38	13.0	27	HS-G1/2
G3/4"	52	45	20.0	32	HS-G3/4