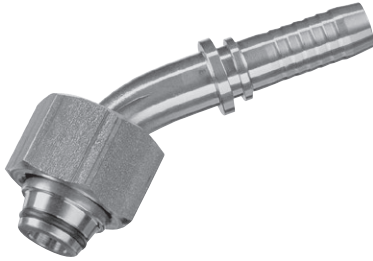
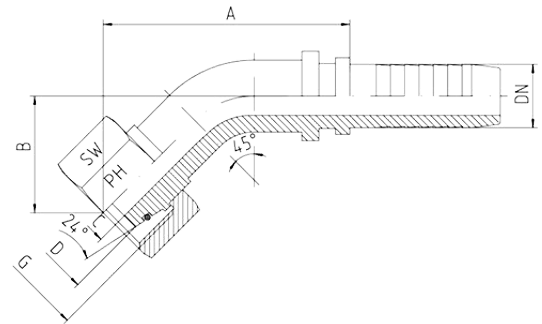


45° Metric Female 24° Cone Seat, S Series with O-Ring DIN 2353



- For fittings with 24° cone and solderless connectors
- DIN 2353 / DIN EN ISO 8434-1
- Heavy series: DKOS 45°
- O-ring: NBR
- On request: Viton



Hose	Bore	Thread	Tube OD	Approx. Dimensions				Order Code
DN		G	D	A	B	C	SW	
05	3/16"	M14 x 1.5	6			3.0	17	DKOS-06-45-DN05
06	1/4"	M14 x 1.5	6	37.0	15.0	4.0	17	DKOS-06-45-DN06
05	3/16"	M16 x 1.5	8	37.0	16.5	3.0	19	DKOS-08-45-DN05
06	1/4"	M16 x 1.5	8	38.5	16.5	4.0	19	DKOS-08-45-DN06
08	5/16"	M16 x 1.5	8	48.0	23.0	4.0	19	DKOS-08-45-DN08
06	1/4"	M18 x 1.5	10	38.5	16.5	4.0	22	DKOS-10-45-DN06
08	5/16"	M18 x 1.5	10	44.5	19.0	5.5	22	DKOS-10-45-DN08
10	3/8"	M18 x 1.5	10	45.5	20.0	7.0	22	DKOS-10-45-DN10
06	1/4"	M20 x 1.5	12	42.0	19.5	4.0	24	DKOS-12-45-DN06
08	5/16"	M20 x 1.5	12	44.5	19.0	5.5	24	DKOS-12-45-DN08
10	3/8"	M20 x 1.5	12	43.5	18.5	7.0	24	DKOS-12-45-DN10
12	1/2"	M20 x 1.5	12	62.5	27.5	8.5	24	DKOS-12-45-DN12
10	3/8"	M22 x 1.5	14	54.5	23.5	7.0	27	DKOS-14-45-DN10
10	3/8"	M24 x 1.5	16	55.5	24.0	7.0	30	DKOS-16-45-DN10
12	1/2"	M24 x 1.5	16	57.0	25.0	9.5	30	DKOS-16-45-DN12
12	1/2"	M30 x 1.5	20	65.0	32.0	9.5	36	DKOS-20-45-DN12
16	5/8"	M30 x 1.5	20	69.0	28.0	12.5	36	DKOS-20-45-DN16
19	3/4"	M30 x 1.5	20	71.5	27.0	12.5	36	DKOS-20-45-DN19
19	3/4"	M36 x 1.5	25	83.0	37.0	14.5	46	DKOS-25-45-DN19
25	1"	M36 x 1.5	25	98.0	39.0	18.5	46	DKOS-25-45-DN25
19	3/4"	M42 x 1.5	30				50	DKOS-30-45-DN19
25	1"	M42 x 1.5	30	98.0	39.5	20.0	50	DKOS-30-45-DN25
25	1"	M52 x 1.5	38				60	DKOS-38-45-DN25
31	1.1/4"	M52 x 1.5	38	116.0	47.0	25.0	60	DKOS-38-45-DN31
38	1.1/2"	M68 x 1.5	50	137.0	53.0	31.0	80	DKOS-50-45-DN38