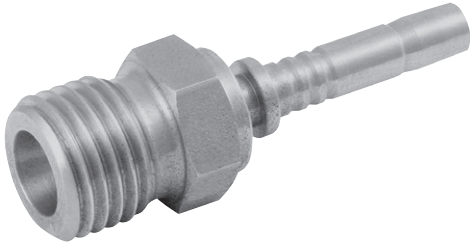
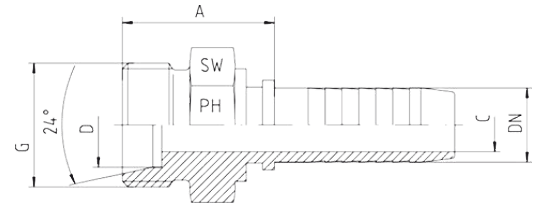


Metric Male 24° Cone Seat, S Series DIN 2353



- For compression couplings
- DIN 2353 / DIN EN ISO 8434-1 with 24° cone
- Heavy series: CES



| Hose | Bore | Thread | Tube OD | Approx. Dimensions | | | Order Code |
|------|--------|-----------|---------|--------------------|------|----|-------------|
| DN | | G | D | A | C | SW | |
| 05 | 3/16" | M14 x 1.5 | 6 | 23.7 | 3.0 | 14 | CES-06-DN05 |
| 06 | 1/4" | M14 x 1.5 | 6 | 25.0 | 4.0 | 14 | CES-06-DN06 |
| 05 | 3/16" | M16 x 1.5 | 8 | 23.7 | 3.0 | 17 | CES-08-DN05 |
| 06 | 1/4" | M16 x 1.5 | 8 | 25.5 | 4.0 | 17 | CES-08-DN06 |
| 06 | 1/4" | M18 x 1.5 | 10 | 25.5 | 4.0 | 19 | CES-10-DN06 |
| 08 | 5/16" | M18 x 1.5 | 10 | 25.5 | 5.5 | 19 | CES-10-DN08 |
| 10 | 3/8" | M18 x 1.5 | 10 | 25.5 | 7.0 | 19 | CES-10-DN10 |
| 08 | 5/16" | M20 x 1.5 | 12 | 27.5 | 5.5 | 22 | CES-12-DN08 |
| 10 | 3/8" | M20 x 1.5 | 12 | 25.5 | 7.0 | 22 | CES-12-DN10 |
| 08 | 5/16" | M22 x 1.5 | 14 | 27.5 | 5.5 | 22 | CES-14-DN08 |
| 10 | 3/8" | M22 x 1.5 | 14 | 28.0 | 7.0 | 22 | CES-14-DN10 |
| 10 | 3/8" | M24 x 1.5 | 16 | 28.0 | 7.0 | 24 | CES-16-DN10 |
| 12 | 1/2" | M24 x 1.5 | 16 | 28.0 | 9.5 | 24 | CES-16-DN12 |
| 12 | 1/2" | M30 x 2 | 20 | 33.0 | 9.5 | 30 | CES-20-DN12 |
| 16 | 5/8" | M30 x 2 | 20 | 34.0 | 12.5 | 30 | CES-20-DN16 |
| 19 | 3/4" | M30 x 2 | 20 | 37.0 | 14.5 | 30 | CES-20-DN19 |
| 19 | 3/4" | M36 x 2 | 25 | 40.0 | 14.5 | 36 | CES-25-DN19 |
| 25 | 1" | M36 x 2 | 25 | 40.0 | 20.0 | 36 | CES-25-DN25 |
| 25 | 1" | M42 x 2 | 30 | 42.5 | 20.0 | 46 | CES-30-DN25 |
| 31 | 1.1/4" | M52 x 2 | 38 | 45.0 | 25.5 | 55 | CES-38-DN31 |