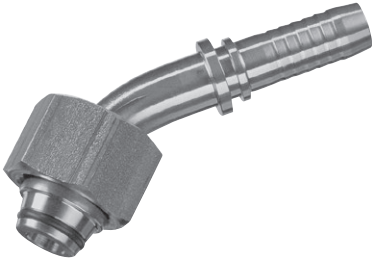
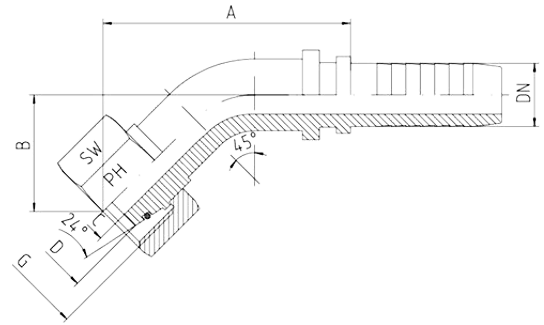


# Metric Female 24° Cone Seat, L Series with O-Ring DIN 2353



- For fittings with 24° cone and solderless connectors
- DIN 2353 / DIN EN ISO 8434-1
- Light series: DKOL 45°
- O-ring: NBR
- On request: Viton



Hose	Bore	Thread	Tube OD	Approx. Dimensions				Order Code
DN		G	D	A	B	C	SW	
05	3/16"	M12 x 1.5	6	44.5	22.5	3.0	14	DKOL-06-45-DN05
06	1/4"	M12 x 1.5	6	37.0	15.0	4.0	14	DKOL-06-45-DN06
05	3/16"	M14 x 1.5	8	37.0	16.5	3.0	17	DKOL-08-45-DN05
06	1/4"	M14 x 1.5	8	38.5	16.5	4.0	17	DKOL-08-45-DN06
08	5/16"	M14 x 1.5	8	51.0	26.0	4.5	17	DKOL-08-45-DN08
06	1/4"	M16 x 1.5	10	38.5	16.5	4.0	19	DKOL-10-45-DN06
08	5/16"	M16 x 1.5	10	44.5	19.0	5.5	19	DKOL-10-45-DN08
10	3/8"	M16 x 1.5	10	45.5	20.0	7.0	19	DKOL-10-45-DN10
06	1/4"	M18 x 1.5	12	42.0	19.5	4.0	22	DKOL-12-45-DN06
08	5/16"	M18 x 1.5	12	44.5	19.0	5.5	22	DKOL-12-45-DN08
10	3/8"	M18 x 1.5	12	43.5	18.5	7.0	22	DKOL-12-45-DN10
12	1/2"	M18 x 1.5	12	62.5	27.5	8.5	22	DKOL-12-45-DN12
10	3/8"	M22 x 1.5	15	53.5	21.5	7.0	27	DKOL-15-45-DN10
12	1/2"	M22 x 1.5	15	54.5	20.5	9.5	27	DKOL-15-45-DN12
12	1/2"	M26 x 1.5	18	60.5	23.5	9.0	32	DKOL-18-45-DN12
16	5/8"	M26 x 1.5	18	65.0	26.5	12.5	32	DKOL-18-45-DN16
16	5/8"	M30 x 2	22	91.5	36.5	12.0	36	DKOL-22-45-DN16
19	3/4"	M30 x 2	22	70.0	28.0	14.5	36	DKOL-22-45-DN19
19	3/4"	M36 x 2	28				41	DKOL-28-45-DN19
25	1"	M36 x 2	28	93.0	33.0	20.0	41	DKOL-28-45-DN25
31	1.1/4"	M45 x 2	35	100.0	44.0	25.0	50	DKOL-35-45-DN31
38	1.1/2"	M52 x 2	42	111.0	48.0	31.0	60	DKOL-42-45-DN38