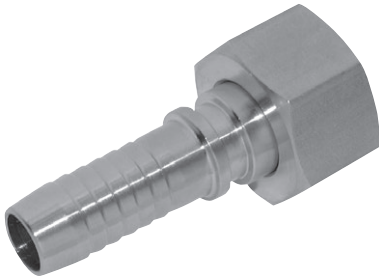
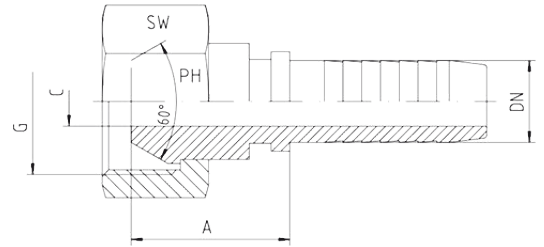


Swivel Female Inserts, BSPP



- With BSP union nut
- For connectors with 60° cone
- DKR straight



Hose	Bore	Thread	Approx. Dimensions			Order Code
DN		G	A	C	SW	
05	3/16"	1/8"-28	16.0	3.0	14	SFI05-18
05	3/16"	1/4"-19	20.0	3.0	17	SFI05-14
06	1/4"	1/8"-28	15.5	4.0	14	SFI06-18
06	1/4"	1/4"-19	21.0	4.0	17	SFI06-14
06	1/4"	3/8"-19	20.0	4.0	19	SFI06-38
06	1/4"	1/2"-14	24.0	4.0	27	SFI06-12
08	5/16"	1/4"-19	20.0	5.0	19	SFI08-14
08	5/16"	3/8"-19	22.0	5.5	19	SFI08-38
08	5/16"	1/2"-14	21.5	5.5	27	SFI08-12
10	3/8"	1/4"-19	20.0	5.0	19	SFI10-14
10	3/8"	3/8"-19	20.5	7.0	19	SFI10-38
10	3/8"	1/2"-14	21.5	7.0	27	SFI10-12
12	1/2"	3/8"-19	24.0	9.5	19	SFI12-38
12	1/2"	1/2"-14	23.5	9.5	27	SFI12-12
12	1/2"	5/8"-14	23.0	9.5	27	SFI12-58
16	5/8"	1/2"-14	21.0	11.5	27	SFI16-12
16	5/8"	5/8"-14	22.0	12.5	27	SFI16-58
16	5/8"	3/4"-14	25.0	12.5	32	SFI16-34
19	3/4"	1/2"-14	23.0	11.5	27	SFI20-12
19	3/4"	3/4"-14	26.5	14.5	32	SFI20-34
19	3/4"	1"-11	27.0	14.5	41	SFI20-1
19	3/4"	1.1/4"-11	33.5	14.5	50	SFI20-114
25	1"	3/4"-14	25.0	16.5	32	SFI25-34
25	1"	1"-11	28.0	20.0	41	SFI25-1
25	1"	1.1/4"-11	32.5	20.0	50	SFI25-114
31	1.1/4"	1"-11	30.0	21.5	41	SFI31-1
31	1.1/4"	1.1/4"-11	31.0	25.5	50	SFI31-114
31	1.1/4"	1.1/2"-11	46.0	25.5	55	SFI31-112
38	1.1/2"	1.1/2"-11	46.0	31.5	55	SFI38-112
38	1.1/2"	2"-11			70	SFI38-2
51	2"	2"-11	35.5	43.0	70	SFI51-2