

In-line Contamination Monitor GRF 302 Mobile Filtration Unit



GRF 302 30 L

Single phase 110V, 240V or 3 phase 415V

Supplied fitted with appropriate plug and full user instructions.

Height 860 mm x Width - overall 500 mm x Depth 560 mm

SPECIFICATION standard

- Electric control box
- **Indicators**
- Delivery line - visual indicator with combined electric cut-out switch
- Nitrile seals
- Flexible hoses - 2 metres long, suction & outlet
- Heavy duty trolley & wheels
- **Inlet (pump protection) filtration** - micron metal mesh
- **Delivery filtration "Spin-on" type** - See Options below

GRF302 OUTLET FILTRATION OPTIONS

Outlet filtration micron options available:

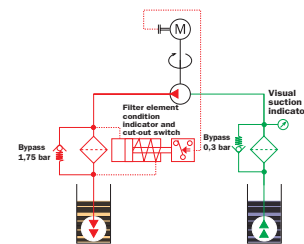
CS150 A SERIES 3, 6, 10 and 25 micron absolute. Effective area - 5390 cm²

CS150 P SERIES 10 and 25 micron nominal. Effective area - 5760 cm²

GRF302 - Water removal options available:

CW150 P SERIES

10 & 25 micron nominal removing 0.79 litres of water while filtering oil at 10 or 25 micron nominal filtration



Technical data

Pump	Gear pump
Electric Motor	0.75kW 110/230 Volt single phase, 415V three phase electric motor
Flow (l/min)	30 l/min
Max. Operation Pressure	5 bar
Viscosity range	Min. operation 10 cSt Max. operation 150 cSt Max. only for cold start 300 cSt
Suction Filter	173 µm metal mesh washable as standard
Filtration Rating	See options*
By-Pass valve	Visual indicator with combined electric cut-out switch
Fluid Temperature	From -10 to +80 °C (fluid viscosity dependent)
Ambient Temperature	From -20 to +45 °C
Protection Class	IP 55
Seal material	NBR
Fluid Compatibility	Mineral Oil
Suction hose - with lance	1" length 2000 mm
Pressure hose - with lance	1" length 2000 mm
Weight/Dimensions	48 kg, Height 860mm, Depth 560mm, Width 500mm

Specifically designed for filling and emptying systems

* Water removal outlet filtration also available

Please note: filtration is not included and should be ordered separately

Spare Parts

Filter element - Standard length

Inorganic microfibre element

CS 100 A01 A P01 1 µm absolute

CS 100 A03 A P01 3 µm absolute

CS 100 A06 A P01 6 µm absolute

CS 100 A10 A P01 10 µm absolute

CS 100 A25 A P01 25 µm absolute

Wire mesh element

CS 100 M25 A P01 25 µm

CS 100 M60 A P01 60 µm

Filter element - Extended length

Inorganic microfibre element

CS 150 A01 A P01 1 µm absolute

CS 150 A03 A P01 3 µm absolute

CS 150 A06 A P01 6 µm absolute

CS 150 A10 A P01 10 µm absolute

CS 150 A25 A P01 25 µm absolute

Wire mesh element

CS 150 M25 A P01 25 µm

CS 150 M60 A P01 60 µm

Ordering information

GRF302 Example: GRF

1	2	3	4	5
30	2	1	M149	S

1 - Flow

30

 30L/min

2 - Electrical power

2

 0.75kW

3 - Electric motor

1

 110V single phase

2

 240V single phase

3

 415V 4 phase

4 - Replacement suction element

M149

 173µm cleanable element

5 - Filtration

S

 No filter fitted, to be ordered separately - see spare parts

HosesDirect

www.hoses.co.uk

www.hoses.co.uk