

Hydraulic Selector Valve Type P81

Nordvalves
hydraulic components

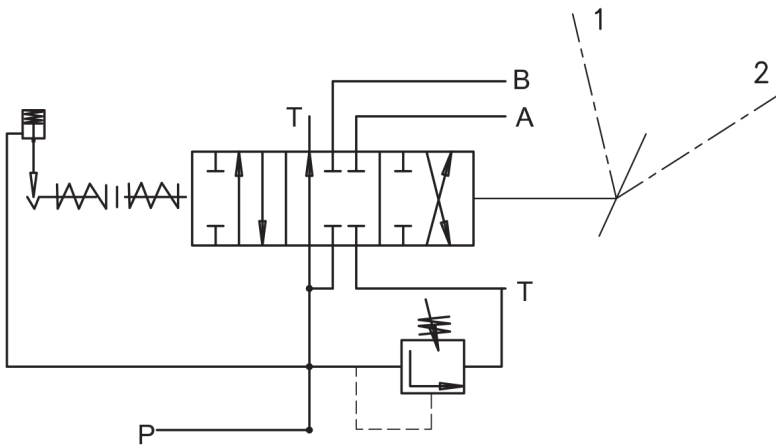
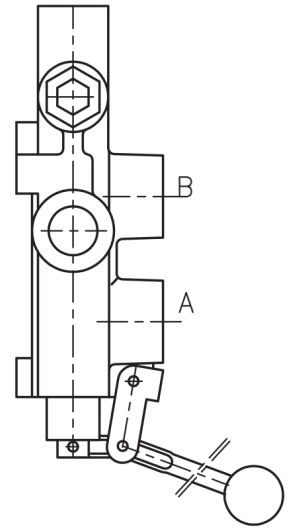
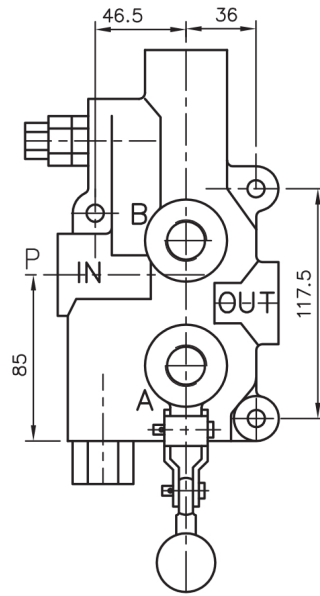
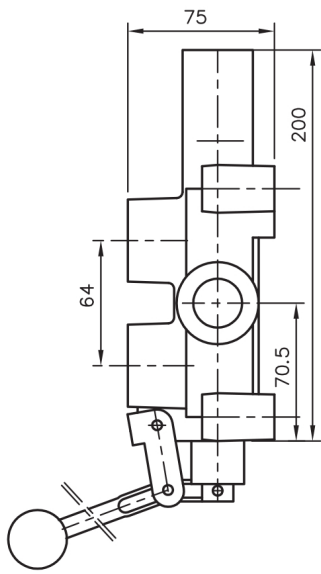


Description

For starting, controlling and stopping the working fluid between the generator of pressured flow, the consumers and the Tank. The valve is provided with hydraulic controlled fixing of the spool. When the set up pressure is reached, the fixing of the spool fall away and the spool release to neutral.

Specifications

1. Valve monoblock	
2. Mounting	3 bolts M8
3. Pressure connections	internal thread
4. Ambient temperature	-40C...+60C
5. Pressure medium	mineral oil based hydraulic oil
6. Viskosity	12...800 mm ² /s permissible range 20...100 mm ² /s recommended range
7. Fluid temperature	- 15C...+80C
8. Filtration	Oil contamination 10 to NAS1638
9. Max. operating pressure	P = 250 bar T = 50 bar A, B = 300 bar 70-140 bar
	the pressure is set up for automatical release of the spool
10. Leakage	20 cm ³ /min at 120 bar
11. Nominal flow	80 l/min (see "operating" diagram)
12. Spool stroke	± 7.9 mm
13. Actuating force	< 220 N in spool axis direction



ORDER CODE: **P81** **A** **2** **G**

directional control valve (80 l)

spool type (A)

spool control
Detend with hydr. release (70-140 bar)

port sizes (S, NPT or G)
(S10=SAE10; G12=G1/2; NPT12=NPT 1/2)



www.hoses.co.uk

2
www.hoses.co.uk