

Layflat Hose



Rubber-covered Agricultural Drag Hose

Applications

- linear and travelling irrigation
- sludge and slurry disposal
- liquid manure handling
- waste water distribution systems
- heavy duty water transport

Features

- excellent resistance to weathering, UV and ozone
- superior abrasion resistance, suitable for all ground conditions
- no biodegradation, excellent resistance to agricultural chemicals and fertilizers
- minimum pressure loss, very low elongation
- supreme adhesion level between rubber and textile reinforcement
- very durable and hardwearing for long service life

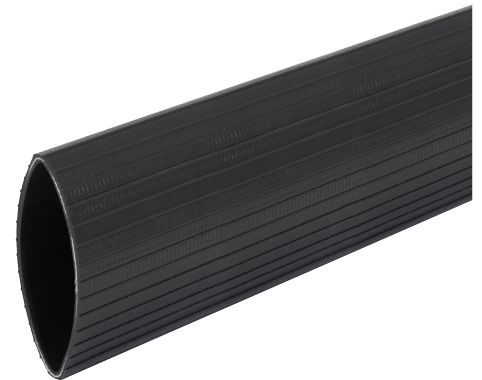
Construction

Textile reinforcement:

- warp: high tenacity polyester, heavy duty construction, ultra-high tensile strength
- weft: polyamide/polyester, circular woven
- the special weaving design offers a superior adhesion level and flow performance compared to an all polyester weave
- very low elongation due to a special manufacturing process
- totally embedded in the rubber compound, excellent protected against mechanical damage

Lining and cover:

- special high grade formulated NBR/PVC compound extruded "through the weave" in a unique one step production process
- special additives in the compound guarantee superior UV and ageing resistance
- inside: very smooth for minimum friction loss
- outside: ribbed and very thick for excellent abrasion resistance



Part Number	Bore Size		Weight gr/m	Wall Thickness mm	Working Pressure Bar	Working Pressure Max. Bar	Bursting Pressure Bar	Breaking Strength kg
	mm	inch						
RLDH2-100	52	2"	600	3,3	16	20	50	3,900
RLDH3-100	76	3"	900	3,3	16	20	50	8.800
RLDH4-100	102	4"	1.350	3,5	16	20	50	12.400
RLDH5-100	127	5"	1.700	3,9	15	18	45	17.000
RLDH6-100	154	6"	1.950	3,9	14	17	42	17.900
RLDH10-100	254	10"	4.200	5,2	10	12	30	43.200

Working pressure:

Pressure data are valid for the hose only (medium water, 20°C/68°F). On coupled hose units the working pressure can be lower because of the nominal pressure of the coupling system or the method of coupling binding. With compressed air the minimum safety ratio is 1:4.

Working pressure max:

The producer reserves the right to approve the hose for the maximum working pressure only after detailed evaluation of the application. Consult factory for details!

Breaking strength:

To obtain maximum lifetime the end pull under working conditions should not exceed 1/3 of the breaking strength.

Standard length: 100/200 m (330/660 ft.), other lengths on request **Standard color:** black

Service temperature: -20°C up to +80°C (-4°F up to +176°F), for water

Change in technical specification without prior notice.