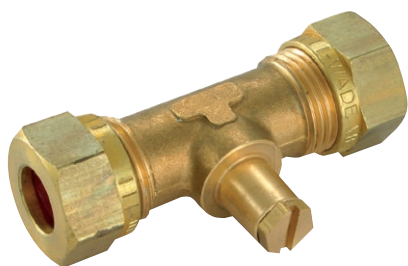


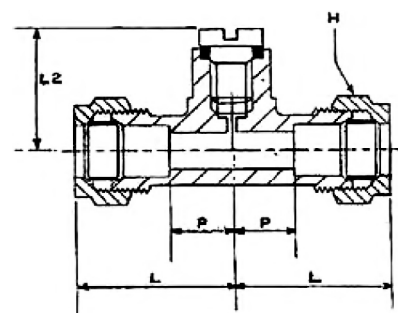
Test Point Union, Metric

Wade



Features & Benefits

- Range includes in-line tube to tube unions, tube to tube elbows and 1/8" BSP taper male nipples
- Designed to provide a pressure test point for LPG and natural gas systems
- Conform to BS 4161
- Compression ends are designed and manufactured to BS 2051
- Wade test point fittings are widely used on caravan and boat pipe installations where EU regulations stipulate the fitting of test points on gas system pipework



Part No	Tube OD	L Length	L2 Length	H Hex A/F	P Abutment
WADE-MTP1208B	8	20.5mm	20.5mm	17mm	6.3mm
WADE-MTP1210B	10	26mm	26mm	19mm	9.5mm
WADE-MTP1212B	12	27.5mm	27.5mm	22mm	8mm
WADE-MTP1215B	15	70.5mm	27.5mm	24mm	20mm