

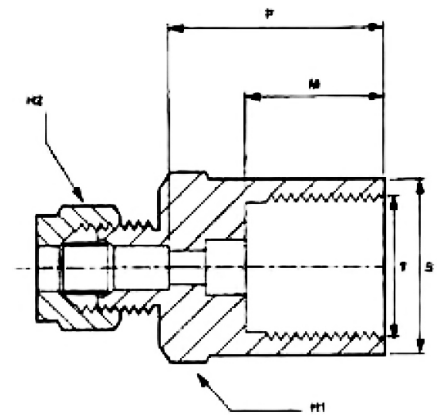
Female Pressure Gauge Connector, BSP Parallel, Imperial

Wade



Features & Benefits

- In-line configuration with a BSP parallel female stud thread
- Enables tube connection to a mating BSP parallel male thread on a pressure gauge
- Designed with a BSP parallel female thread to enable tube connection with a pressure gauge
- The internal form at the back of this thread is dimensioned to house the external male BSP parallel connection thread of the pressure gauge



Part No	Tube OD	T BSPP Female Thread	M Stud Length	H1 Hex A/F	H2 Hex A/F	P Abutment	S Diameter
WADE-1083A	1/4"	1/4"	0.437"	0.71"	0.601"	0.781"	0.7"
WADE-4083/8A	1/4"	3/8"	0.5"	0.92"	0.601"	0.875"	0.9"
WADE-40831/11A	1/4"	1/2"	0.75"	1.01"	0.601"	1.125"	0.982"
WADE-1088A	3/8"	3/8"	0.5"	0.92"	0.82"	0.718"	0.9"
WADE-4088/11A	3/8"	1/2"	0.75"	1.01"	0.82"	0.968"	0.982"