

Accessories for Series MD

Series MD modular FRL units



Screws for wall mounting Mod. MD1-D

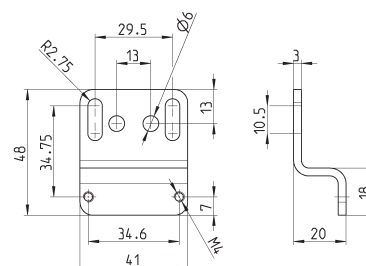
The kit is supplied with:
2x white zinc-plated screws M4x50



Mod.
MD1-D

Rear bracket Mod. MD1-ST/1

The kit is supplied with:
1x zinc-plated bracket
2x white zinc-plated screws M4x50



Mod.
MD1-ST/1

Mounting bracket Mod. C114-ST

For regulators and filter-regulators (G1/4 - G1/8)

The kit is supplied with:
1x zinc-plated steel bracket

