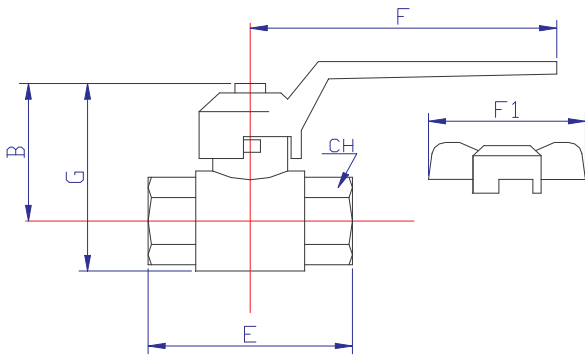
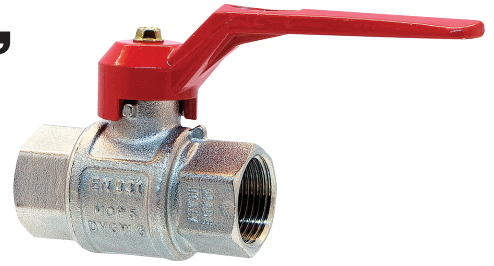
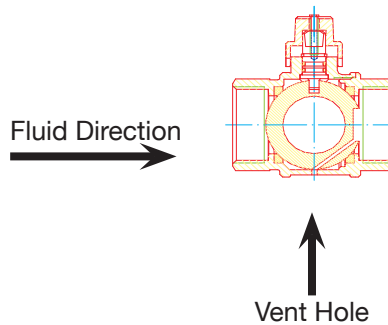


# Full Flow Venting Ball Valves, Brass



filetto	B	E	F	G	CH	DN
1/2"	51	61	84	60	25	15
3/4"	56	70	102	66	30	20
1"	58	81	102	74	37	25
1,1/4"	73	94	125	89	48	32
1,1/2"	78	105	125	101	54	40
2"	93	126	145	122	66	50



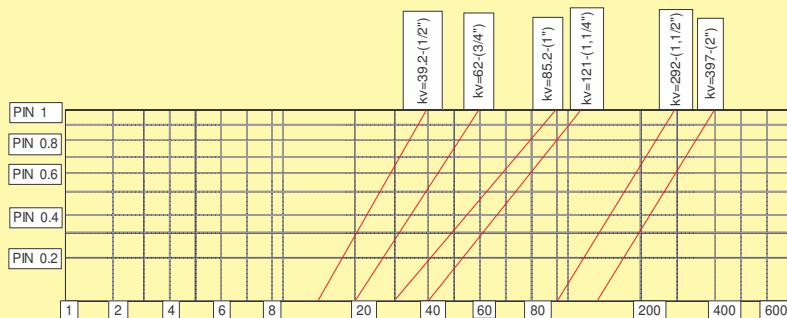
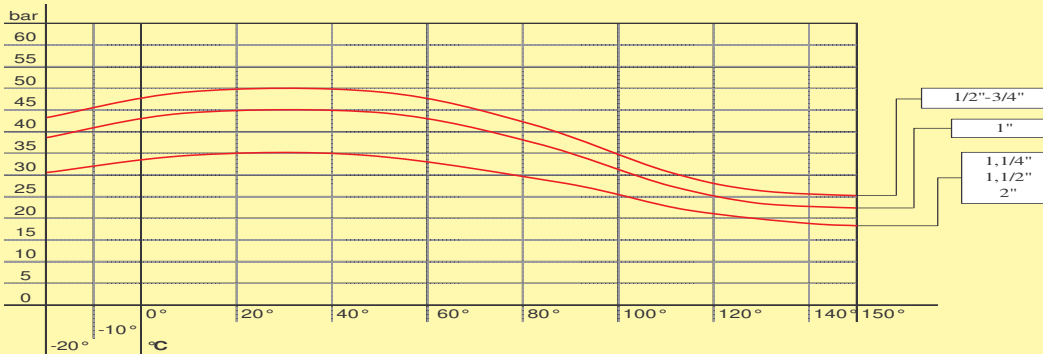
**MATERIALS**

BODY, SLEEVE: Brass CW617N-UNIEN12165  
 STEM: Brass CW614N-UNIEN12164  
 BALL: Brass CW617N-UNIEN12165 chrome-plated  
 O-RINGS: Nbr+Fkm

SEALS: pure PTFE  
 HANDLE: Aluminium EN-AB46100  
 SEEGER: bronze  
 SCREW: Zincplated steel

## TECHNICAL DATA

pressure / temperature



Threads: **UNI EN 10226-1 (ex ISO7/1)**

Working temperature: **-10° +120°C**  
 Valve conforming with directive **97/23/EC**

**FINAL TEST**  
 conforming with  
**UNI EN 12266-1 points A3 or A4**  
 For 1,1/2"-2" sizes:  
 conforming with directive **97/23/EC**

INSTRUCTIONS: Valve opened: the handle is parallel to the body

Valve closed: the handle is perpendicular to the body

This valve must be employed according to this data sheet instructions. For 1,1/4" and superior sizes, it can't be employed for dangerous fluids: explosive, extremely flammable, highly flammable, flammable (where the maximum allowable temperature is above flashpoint), very toxic, toxic, oxidizing.

Ref. DIRECTIVE 97/23/EC PED

