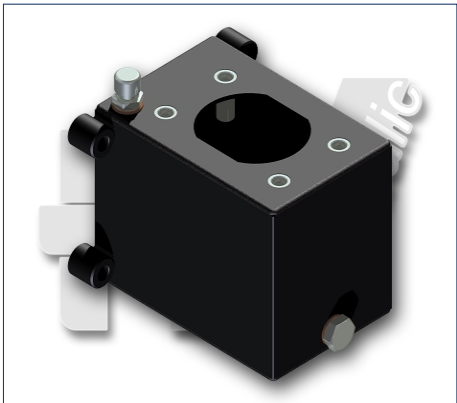
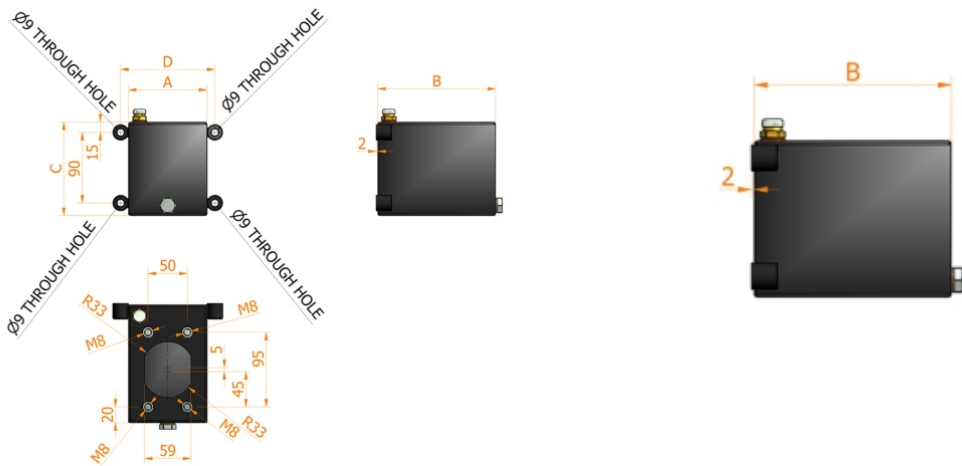


OIL TANK

STEEL OIL TANK

painted steel oil tank for hand pumps
 lt. 1

- Specifications:**
- Model S1 ac 100x150x120
 - Suction pipe included
 - Breather cap 1/4 G
 - Release cap 1/4 G
 - Standard colour black

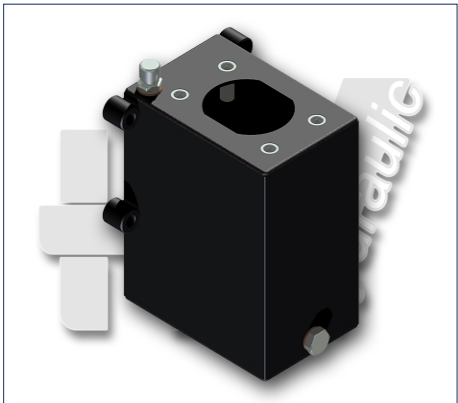
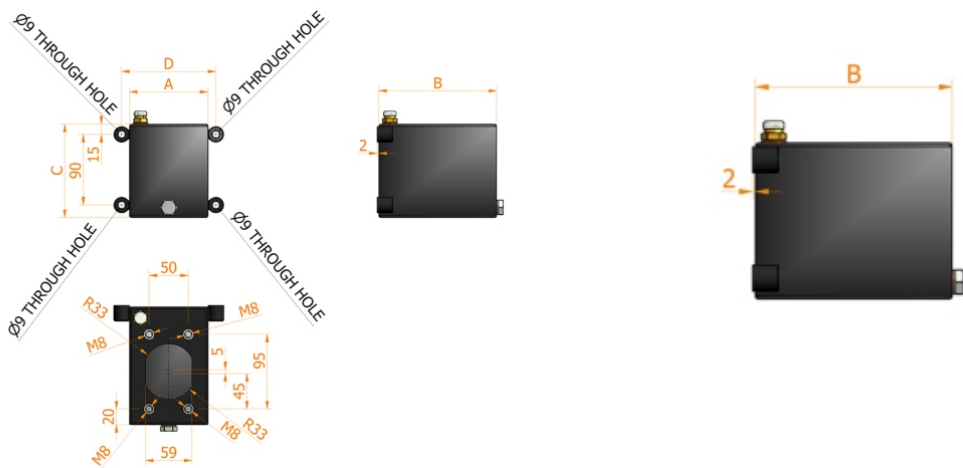


CAPACITY liters	A mm	B mm	C mm	D mm	MASS KG	SUCTION PIPE	CODE
1	100	150	120	120	2,200	Ø10x85 mm	6500.0140

STEEL OIL TANK

painted steel oil tank for hand pumps
 lt. 2

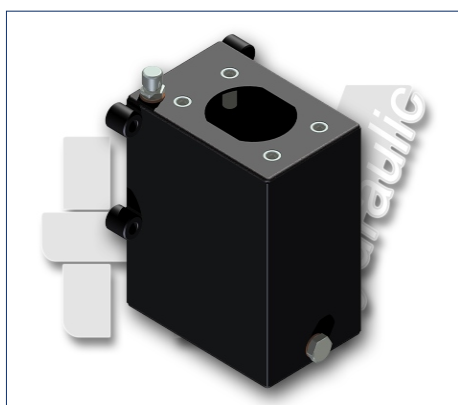
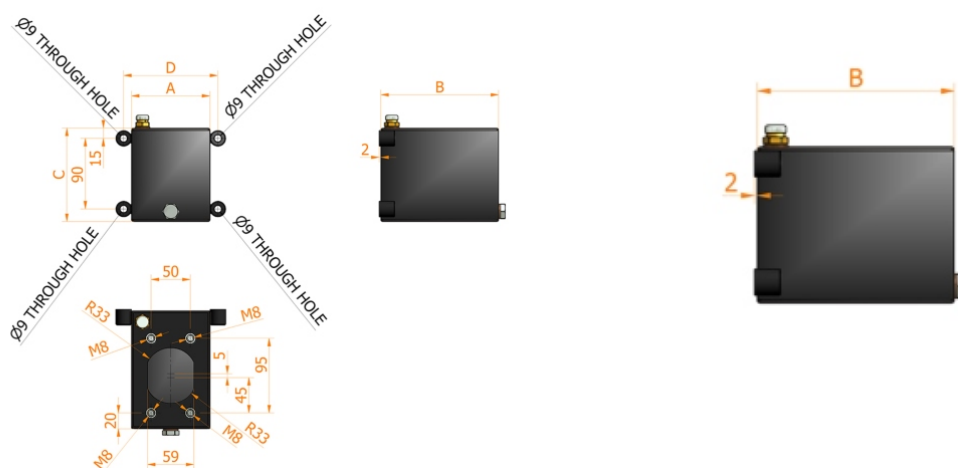
- Specifications:**
- Model S2 ac 100x150x185
 - Suction pipe included
 - Breather cap 1/4 G
 - Release cap 1/4 G
 - Standard colour black



CAPACITY liters	A mm	B mm	C mm	D mm	MASS KG	SUCTION PIPE	CODE
2	100	150	185	120	3,000	Ø10x114 mm	6500.0141

painted steel oil tank for hand pumps
 lt. 2

- Model S2 ac 100x150x185
- Suction pipe included
- Breather cap 1/4 G
- Release cap 1/4 G
- Standard colour black



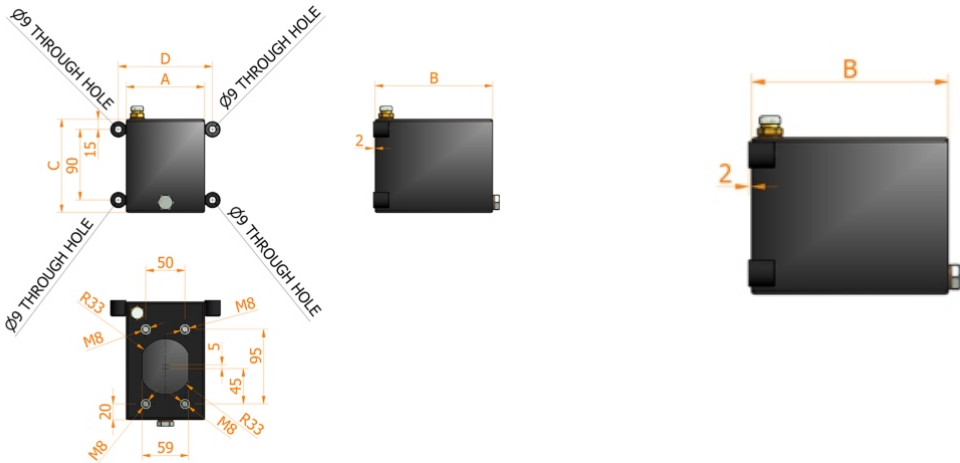
CAPACITY liters	A mm	B mm	C mm	D mm	MASS KG	SUCTION PIPE	CODE
2	100	150	185	120	3,000	Ø10x114 mm	6500.0141

STEEL OIL TANK

painted steel oil tank for hand pumps
 lt. 3

Specifications:

- Model S1 ac 100x150x120
- Suction pipe included
- Breather cap 1/4 G
- Release cap 1/4 G
- Standard colour black



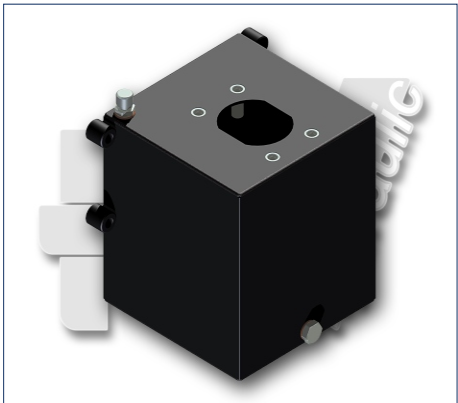
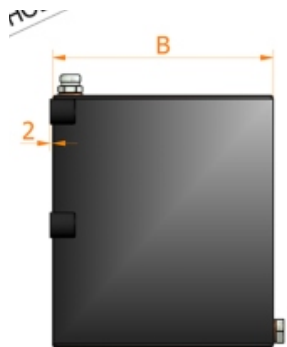
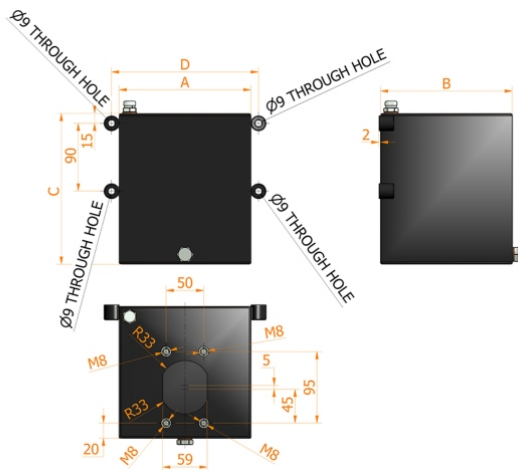
CAPACITY liters	A mm	B mm	C mm	D mm	MASS KG	SUCTION PIPE	CODE
3	100	150	255	120	3,700	Ø10x180 mm	6500.0142

STEEL OIL TANK

painted steel oil tank for hand pumps
 lt. 5

Specifications:

- Model S5 ac 175x175x200
- Suction pipe included
- Breather cap 1/4 G
- Release cap 1/4 G
- Standard colour black



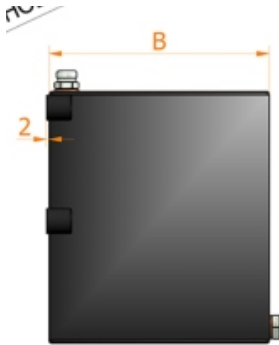
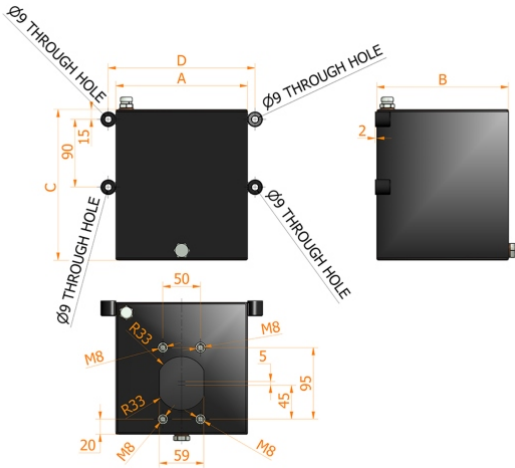
CAPACITY liters	A mm	B mm	C mm	D mm	MASS KG	SUCTION PIPE	CODE
5	175	175	200	195	5,300	Ø10x156 mm	6500.0143

STEEL OIL TANK

painted steel oil tank for hand pumps
 lt. 7

Specifications:

- Model S7 ac 175x175x275
- Suction pipe included
- Breather cap 1/4 G
- Release cap 1/4 G
- Standard colour black



CAPACITY liters	A mm	B mm	C mm	D mm	MASS KG	SUCTION PIPE	CODE
7	175	175	275	195	6,600	Ø10x215 mm	6500.0144