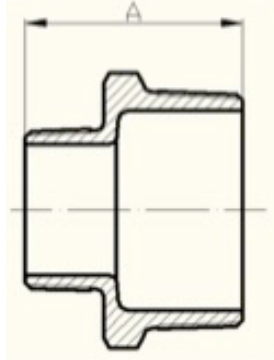


# Malleable Iron Fittings

## Hexagon Reducing Nipple (245)



## Equal Hexagon Nipple (280)



Size		Dimensions (mm)
Inch	mm	A
1/4X1/8	8X6	31
3/8X1/8	10X6	34
3/8X1/4	10X8	38
1/2X1/4	15X8	44
1/2X3/8	15X10	44
3/4X1/4	20X8	36
3/4X3/8	20X10	47
3/4X1/2	20X15	47
1X3/8	25X10	43
1X1/2	25X15	53
1X3/4	25X20	53
1 1/4X3/4	32X20	57
1 1/4X1/2	32X15	57
1 1/4X1	32X25	57
1 1/2X1/2	40X15	59
1 1/2X3/4	40X20	59
1 1/2X1	40X25	59
1 1/2X1 1/4	40X32	59
2X1	50X25	68
2X1 1/4	50X32	68
2X1 1/2	50X40	68
2 1/2X1 1/2	65X40	75
2 1/2X2	65X50	75
3X2	80X50	83
3X2 1/2	80X65	83