



## Excelon modular system Accessories

### Soft start valve

Series	Port size	Flow (CV)	Model
72	G1/4	1,35	P72E-2GN-NNN
72	G3/8	1,35	P72E-3GN-NNN
74	*	40	P74E-NNN-NNN

\*Ports are unthreaded. Quikclamps (this page) and Quikmount pipe adaptors (page 455) are required.

Controls the rate of downstream pressure build-up at system start up

High flow

Cushioned poppets for long life



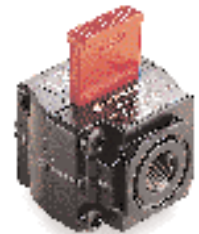
### Shut-off valves

Series	Port size	Model 2/2	Model 3/2
72	G1/4	T72B-2GA-P1N	T72T-2GA-PIN
72	G3/8	T72B-3GA-P1N	T72T-3GA-PIN
73	G1/4	T73B-2GA-P1N	T73T-2GA-PIN
73	G3/8	T73B-3GA-P1N	T73T-3GA-PIN
73	G1/2	T73B-4GA-P1N	T73T-4GA-PIN
74	G3/8	T74B-3GA-P1N	T74T-3GA-PIN
74	G1/2	T74B-4GA-P1N	T74T-4GA-PIN
74	G3/4	T74B-6GA-P1N	T74T-6GA-PIN

Ideal for isolating sub-systems not in use

Easy to operate – low stiction

Lockable in the 'closed' position



### Solenoid operated control valves

Series	Port size	Function	Type	Model
72	G1/4	3/2 NC	Solenoid	P72C-2GC-PFN
72	G1/4	3/2 NC	Pilot	P72C-2GA-NNN
72	G3/8	3/2 NC	Solenoid	P72C-3GC-PFN
72	G3/8	3/2 NC	Pilot	P72C-3GA-NNN
74	*	2/2 NC	Solenoid	P74A-NGC-PFN
74	*	2/2 NO	Solenoid	P74B-NGC-PFN
74	*	3/2 NC	Solenoid	P74C-NGC-PFN
74	*	3/2 NC	Solenoid with lockout	P74C-NGD-PFN
74	*	2/2 NC	Pilot	P74A-NGA-NNN
74	*	2/2 NO	Pilot	P74B-NGA-NNN
74	*	3/2 NC	Pilot	P74C-NGA-NNN

\*Ports are unthreaded. Quikclamps (this page) and Quikmount pipe adaptors (page 455) are required. Solenoid models are fitted with 24 V d.c., 2 W coils – no connector plugs, see page 382

3 port and 2 port, normally closed or normally open versions.

High flow, spring return.

Solenoid or air pilot operated.

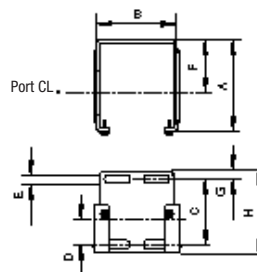


### Wall mounting bracket

Series	Model
72	4224-50
73	4424-50
74	4324-50
L74*	4324-51

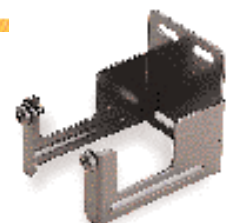
\* with 1 litre bowl

Series	A	B	C	D	E	F	G	H
72	60	42	39	18,6	4	38	6	51
73	67	60	48	19	7	38	6	61
74	79	69	50	20	5	51	6	61



Provides secure wall mounting for individual Excelon products\*

\*Except P72, P74, T73 and T74 units.



### Quikclamp

Series	Model
72	4214-51
73 & 74	4314-51

Allows easy connection of one Excelon unit to another

One piece – no loose parts

Uniquely, connected products can be rotated in 90° increments

