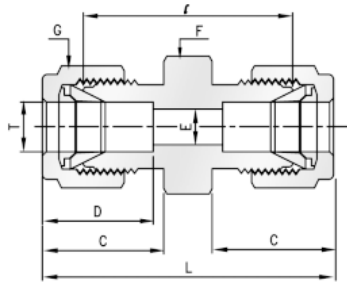


# Brass Twin Ferrule Imperial Tube Fitting



## Equal Union, Tube x Tube



Part No.	Tube O.D. T in	E mm	f in	G in	C	D	I	L
U-125-B	1/8	2.28	7/16	7/16	12.70	15.24	22.35	35.56
U-250-B	1/4	4.82	1/2	9/16	15.24	17.78	26.16	40.89
U-375-B	3/8	7.11	5/8	11/16	16.76	19.30	30.22	44.95
U-500-B	1/2	10.41	13/16	7/8	22.83	21.84	30.98	51.30
U-750-B	3/4	15.74	1.1/16	1.1/8	24.38	21.84	33.27	53.59
U-1000-B	1	22.35	1.3/8	1.1/2	31.24	26.41	40.38	64.77