

Hydraulic Couplings



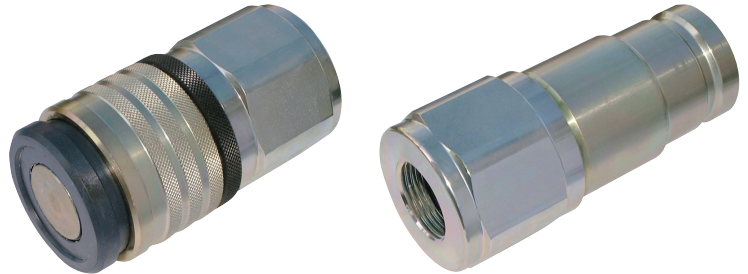
TFF5000/TFF7500/TFF10000 Series

Technical Description

The coupling system of the TFF series has double shut-off, dry break and single-handed operation. During disconnection there is no oil loss, and during coupling there is no inclusion of air into the system.

Advantages

- Dry break quick connect coupling with minimum pressure drop.
- Single-handed operation.
- No oil loss during disconnection.
- A safety closing ring prevents unintentional disconnection.
- Twice as safe through double sealing.
- Also available with pressure eliminator, i.e. connection is possible under static/residual pressure up to working pressure.



Working Pressure

See charts.



Double Shut Off

Working Temperature

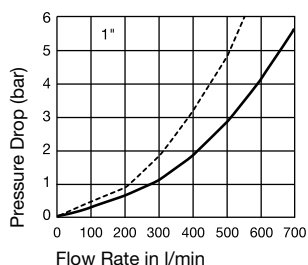
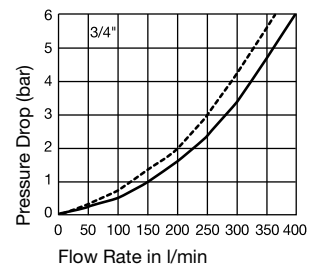
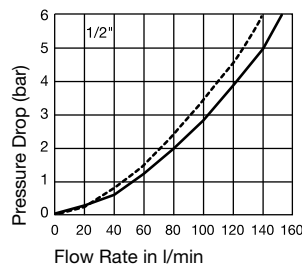
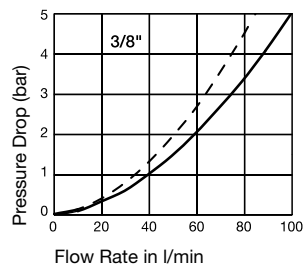
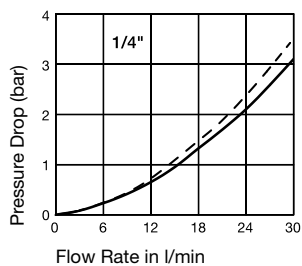
-30°C up to +100°C (NBR), -25°C up to +200°C (FKM) depending on the medium.

Special seals are available on request.

Body Size	Bursting Pressure connected
1/4"	> 3200 bar
3/8"	> 2000 bar
1/2"	> 1500 bar
3/4"	> 1500 bar
1"	> 1100 bar

Material Coupling	Standard / Pressure Eliminator
Coupling Body	Steel, nitrocarburizing
Sleeve	Steel hardened, zinc plated, passivated, sealed
Locking Ring	Brass, zinc-iron coated, black passivated, sealed
Valve	Steel, zinc plated, passivated, sealed
Springs	AISI 301
Locking	Balls AISI 420 C
Seals	NBR
Valve Holder	Steel, yellow zinc plated, sealed
Thread Body	Steel, zinc plated, passivated, sealed
Plug	Standard / Pressure Eliminator
Plug Body	Steel hardened, zinc plated, passivated, sealed
Valve	Steel, nitrocarburizing
Springs	AISI 301
Seals	NBR/PUR
Valve Holder	Brass, hard-drawn
Thread Body	Steel, zinc plated, passivated, sealed

Flow Capacity with Oil with Viscosity of 32cSt at 40°C as per ISO 7241/2-2000

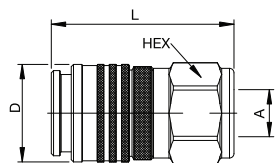


— Standard FF
- - - Plug side pressure eliminator

Hydraulic Couplings

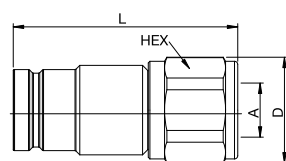


TFF5000/TFF7500/TFF10000 Series



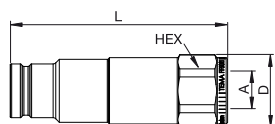
Female Thread

Couplings								
Body Size	Connection A	Hex mm	L mm	D mm	Working Pressure Connection	Version	Seal	Part Number
1/2"	G 1/2	40	82	44	450 bar	Standard	NBR/PUR	TE-TFF5010
1/2"	G 1/2	40	82	44	450 bar	Standard	FKM	TE-TFF5010 V
3/4"	G 3/4	50	98	55	400 bar	Standard	NBR	TE-TFF7510



Female Thread

Plugs								
Body Size	Connection A	Hex mm	L mm	D mm	Working Pressure Connection	Version	Seal	Part Number
1/2"	G 1/2	36	86	39	450 bar	Standard	NBR/PUR	TE-TFF5020
1/2"	G 1/2	36	86	39	450 bar	Standard	FKM	TE-TFF5020 V
3/4"	G 3/4	46	101	50	400 bar	Standard	NBR/PUR	TE-TFF7520



Female Thread

Plugs								
Body Size	Connection A	Hex mm	L mm	D mm	Working Pressure Connection	Version	Seal	Part Number
3/4"	G 3/4	46	139	50	400	Pressure Eliminator	NBR/PUR	TE-TFF7521
1"	G 1	55	175	60	350	Pressure Eliminator	NBR/PUR	TE-TFF10021