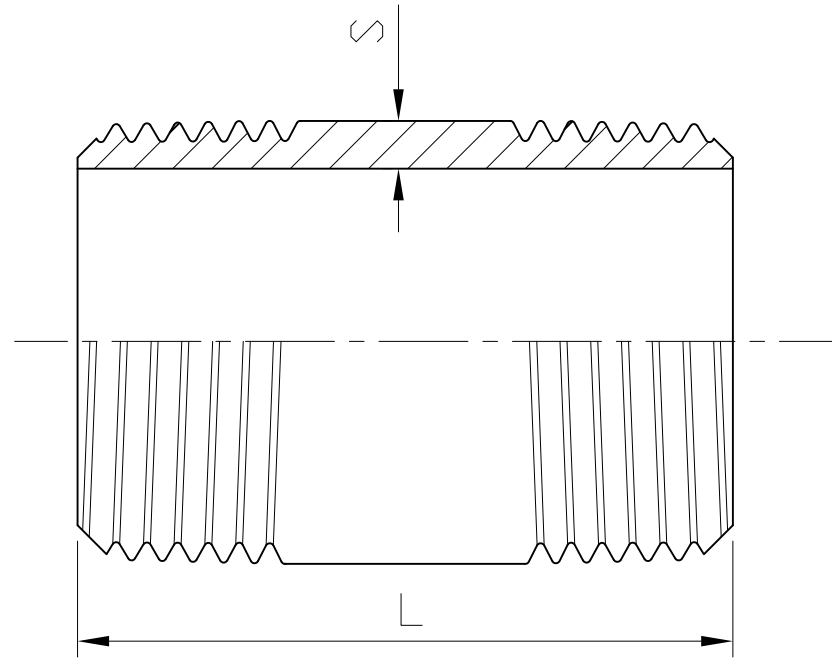


Ra	0.2	▽▽▽▽
1.6	▽▽	▽▽▽▽
6.3	▽▽	▽▽
25	▽	▽
Q	~	

GENERAL TOLERANCE	± 0.1
0.5-5	± 0.2
6-30	± 0.3
31-120	± 0.5
121-320	± 0.8
321-1000	± 0.8

HAITIMA CORPORATION  
 P.O. BOX 34-36, TAIPEI  
 Tel: +886-2-26585800  
 E-mail: haitima@seednet.tw  
 TAIWAN R.O.C. www.haitima.com.tw  
 Fax: +886-2-26582266

# BARREL NIPPLE



SIZE	1/8"		1/4"		3/8"		1/2"		3/4"		1"		1-1/4"		1-1/2"		2"		2-1/2"		3"		4"	
	mm	in	mm	in	mm	in	mm	in	mm	in	mm	in	mm	in	mm	in	mm	in	mm	in	mm	in	mm	in
S	1.7	0.07	2	0.08	2	0.08	2.5	0.1	2.5	0.1	3.2	0.13	3.2	0.13	3.2	0.13	3.6	0.14	3.6	0.14	4	0.16	4.5	0.18
L	40	1.57	40	1.57	40	1.57	60	2.36	60	2.36	60	2.36	80	3.15	80	3.15	100	3.94	100	3.94	120	4.72	120	4.72

Tolerance: ± 0.5mm(1/8"~2")  
 ± 0.8mm(2-1/2"~4")

△			
△			
△			
Revise	Description	Date	Approve
DRAWING NO. <b>F10</b>		<b>-08</b>	

<b>HAITIMA CORPORATION</b> Ball Valves & Pipe Fittings	CHECK BY	DRAWING BY	DATE	SPECIFICATION	Barrel Nipple
		<i>Dune</i>	May.22.2008	MATERIAL	304/316
				PROCESS/No.	
				SCALE	mm