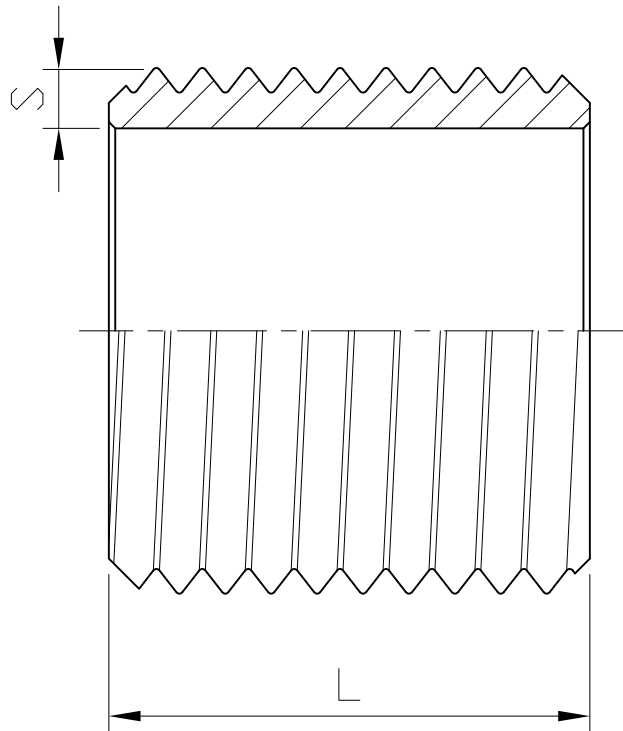


# THREAD NIPPLE



Ra	0.2	▽▽▽▽
▽	1.6	▽▽▽
▽	6.3	▽▽
▽	25	▽
Q	~	

GENERAL TOLERANCE	± 0.1
0.5-5	± 0.2
6-30	± 0.3
31-120	± 0.5
121-320	± 0.8
321-1000	± 0.8

HAITIMA CORPORATION  
 P.O. BOX 34-36 TAIPEI  
 Tel:+886-2-26585800  
 E-mail:haitima@seednet.tw  
 TAIWAN R.O.C. www.haitimo.com.tw  
 F.o.x:+886-2-26582266

SIZE	1/8"		1/4"		3/8"		1/2"		3/4"		1"		1-1/4"		1-1/2"		2"		2-1/2"		3"		4"	
	mm	in	mm	in	mm	in	mm	in	mm	in	mm	in	mm	in	mm	in	mm	in	mm	in	mm	in	mm	in
S	1.7	0.07	2	0.08	1.9	0.07	2.3	0.09	2.5	0.1	3.2	0.13	3.2	0.13	3.2	0.13	3.6	0.14	3.6	0.14	4	0.16	4.5	0.18
L	16	0.63	18	0.71	22	0.87	25	0.98	30	1.18	35	1.38	38	1.5	38	1.5	45	1.77	55	2.17	60	2.36	70	2.76

Tolerance: ± 0.5mm(1/8"~2")  
 ± 0.8mm(2-1/2"~4")

△			
△			
△			
Revise	Description	Date	Approve
DRAWING NO. F11		-08	

**HAITIMA CORPORATION**  
 Ball Valves & Pipe Fittings

CHECK BY	DRAWING BY	DATE	SPECIFICATION	Thread Nipple
	Dune	May.22.2008	MATERIAL	304/316
			PROCESS/No.	
			SCALE	mm