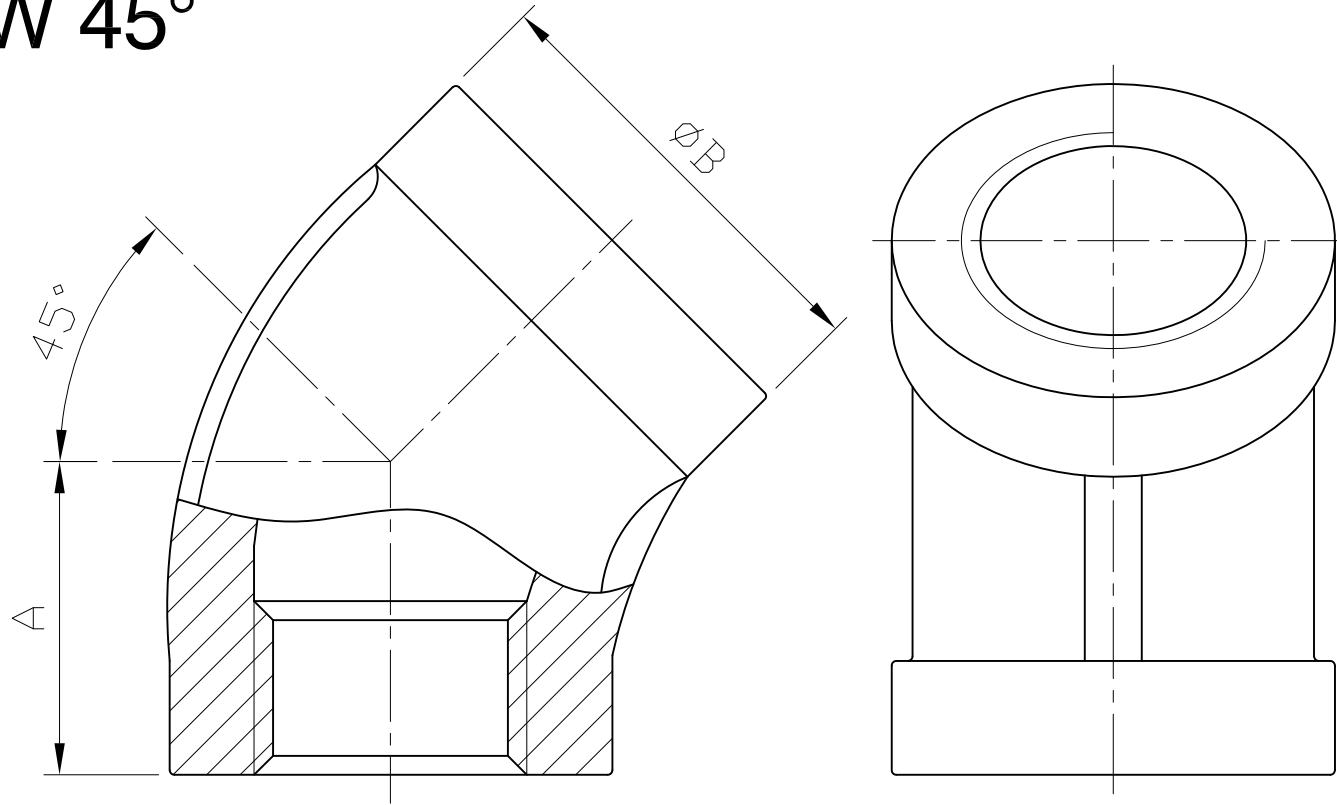


ELBOW 45°



Ra	0.2	▽▽▽
1.6	▽▽	▽▽
6.3	▽	▽
25	▽	▽
Q	~	

0.5-5	± 0.1
6-30	± 0.2
31-120	± 0.3
121-320	± 0.5
321-1000	± 0.8

GENERAL TOLERANCE

HAITIMA CORPORATION
P.O. BOX 34-36 TAIPEI
Tel+886-2-26585800

E-mail: haitima@seednet.tw
www.haitima.com.tw
TAIWAN R.O.C. F.o.x: +886-2-26582266

SIZE	1/8"		1/4"		3/8"		1/2"		3/4"		1"		1-1/4"		1-1/2"		2"		2-1/2"		3"		4"	
	mm	in	mm	in	mm	in	mm	in	mm	in	mm	in	mm	in	mm	in	mm	in	mm	in	mm	in	mm	in
A	15	0.59	16	0.63	18	0.71	20	0.79	24	0.94	27	1.06	31	1.22	34	1.34	39	1.54	46	1.81	52	2.05	63	2.48
B	16	0.63	18.4	0.72	22	0.87	29	1.14	32	1.26	42	1.65	48.4	1.91	57	2.24	70	2.76	88	3.46	101	3.98	127.6	5.02

Tolerance: ± 0.5mm(1/8"~2")
± 0.8mm(2-1/2"~4")

△			
△			
△			
Revise	Description	Date	Approve
DRAWING NO. F02		-09	

HAITIMA CORPORATION
Ball Valves & Pipe Fittings

CHECK BY	DRAWING BY	DATE	SPECIFICATION
	<i>Dune</i>	Jun.29.2009	Elbow 45°
			MATERIAL 304/316
			PROCESS/No.
			SCALE mm