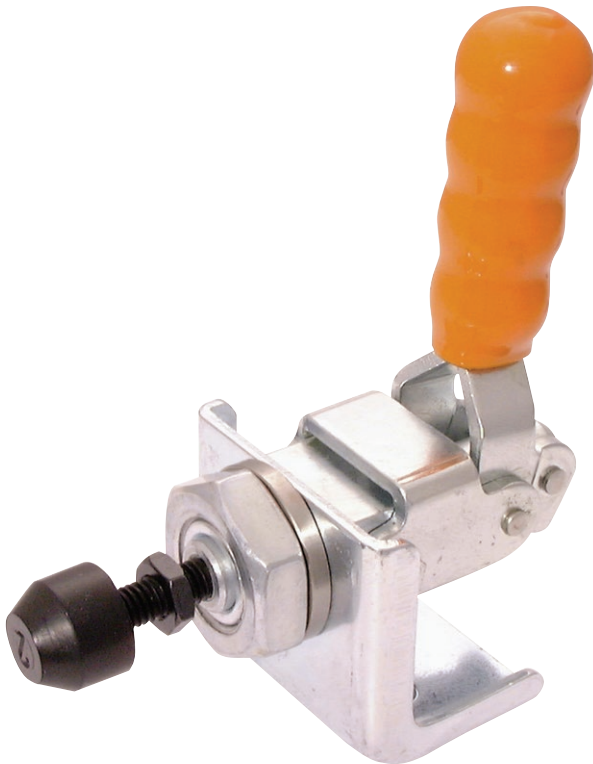


Push-Pull Clamps



Features:

These push-pull clamps are mounted either directly into a threaded or plain hole in a fixture, or can be mounted in a bracket which is either supplied with the clamp or offered as an accessory.

Nose mounting allows the clamp to be rotated to the required angle and locked by means of the locknut provided. They offer long strokes in light-duty clamps.

A comfortable, cushioned PVC handle grip is fitted to all push-pull clamps.

Specification:

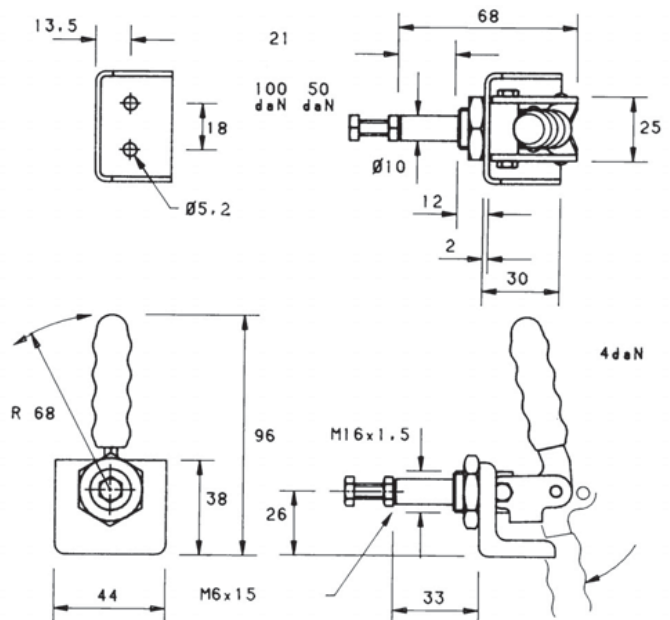
The main components are of steel with either a zinc plated and passivated or manganese phosphated finish. All models are supplied with a steel setscrew and locknut finished chemiblack.

Installation:

When mounting clamps ensure that the mechanism clears the mounting bracket or fixture.

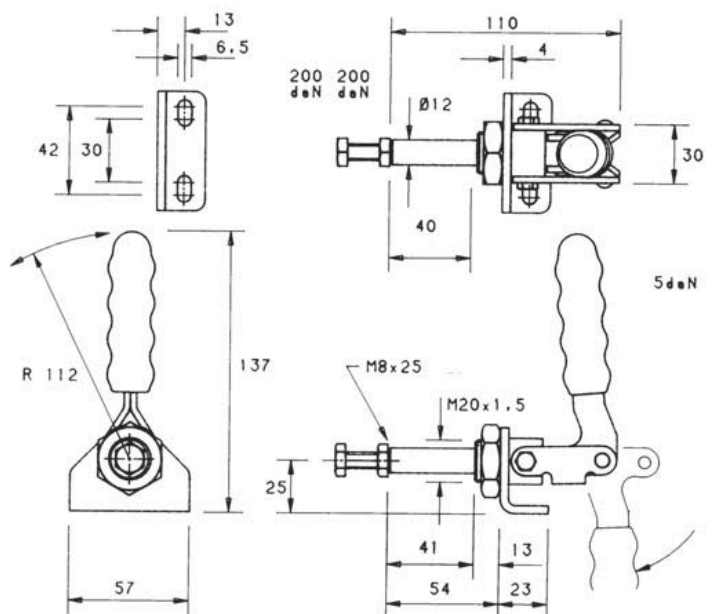
BR-P100

- Plunger: locks at both extended and retracted ends of the stroke
- Base: nose or flange mounting
- Nominal holding force: 100 daN
- Weight: 0.15kg
- MB0625 setscrew and nut, mounting bracket and locknut



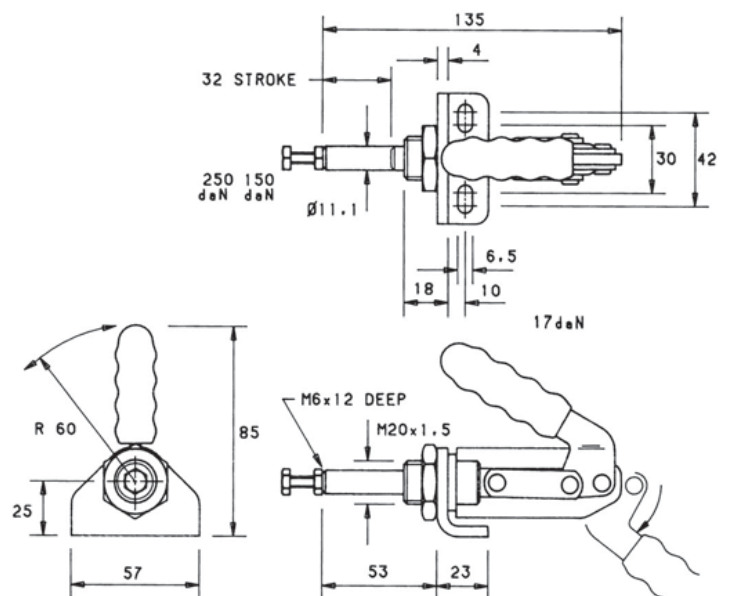
BR-P200

- Plunger: locks at both extended and retracted ends of the stroke
- Base: nose or flange mounting
- Nominal holding force: 200 daN
- Weight: 0.35kg
- MB0840 setscrew and nut, mounting bracket and locknut



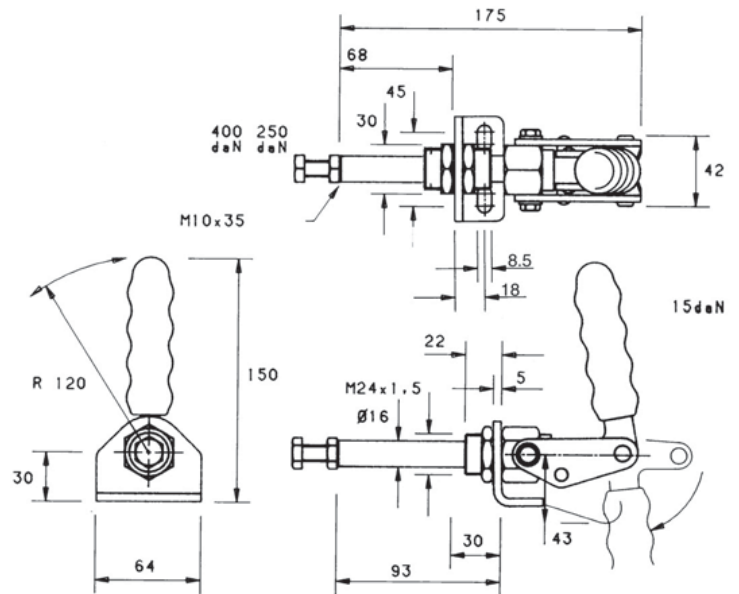
BR-P250

- Plunger: locks at both extended and retracted ends of the stroke
- Base: nose or flange mounting
- Nominal holding force: 250 daN
- Weight: 0.30kg
- MB0625 setscrew and nut, mounting bracket and locknut



BR-P400

- Plunger: locks at both extended and retracted ends of the stroke
- Base: nose or flange mounting
- Nominal holding force: 400 daN
- Weight: 0.80kg
- MB1050 setscrew and nut, mounting bracket and locknut



BR-P450

- Plunger: locks at both extended and retracted ends of the stroke
- Base: nose or flange mounting
- Nominal holding force: 450 daN
- Weight: 0.75kg
- MB1050 setscrew and nut, mounting bracket and locknut

